



RADCOT STREET, SE11

£750,000

Two bedrooms
Private entrance
High specification
Beautifully presented
Private garden
Excellent transport links

@marshandparsons
marshandparsons.co.uk

MARSH &
PARSONS

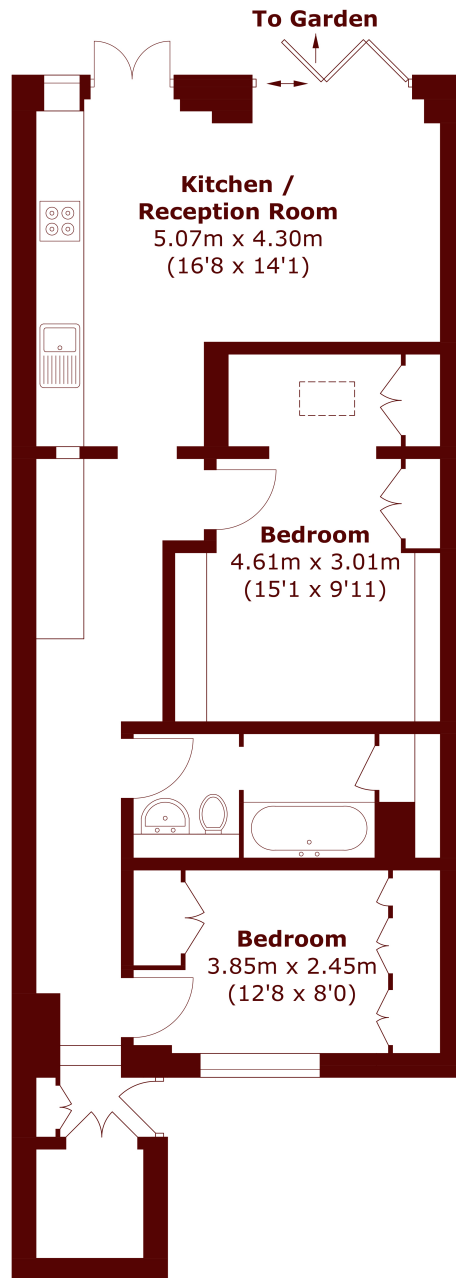


ABOUT THE PROPERTY

An unusual architect-designed two bedroom garden apartment on Radcot Street. Designed by Azman Owens, known for projects associated with Alexander McQueen and Vivienne Westwood, the apartment combines contemporary architecture with a calm, design-led aesthetic. The property opens onto a beautifully landscaped south-facing walled garden via full-width bi-fold doors, creating a seamless indoor-outdoor living space rarely found in central London. There is bespoke maple joinery throughout, oak flooring, underfloor heating, skylights and integrated speakers, with exceptional attention paid to light, proportion and flow. The garden itself is a genuine sun trap with mature planting, poured concrete seating and split-level terraces.



STEP INSIDE RADCOT STREET



Total area (approx.): 64.6 sq. m (695.3 sq. ft)

Kennington
020 7587 1533

Energy Rating: C We aim to make our particulars both accurate and reliable. However, they are not guaranteed; nor do they form part of an offer or contract. If you require clarification on any points then please contact us, especially if you're traveling some distance to view. Please note that appliances and heating systems have not been tested and therefore no warranties can be given as to their good working order

**MARSH &
PARSONS**