



TALBOT ROAD, W2

£795,000

Two double bedrooms
Excellent condition
Amazing location
Private balcony
Two bathrooms
EPC- D

@marshandparsons
marshandparsons.co.uk

MARSH &
PARSONS

ABOUT THE PROPERTY

A beautifully presented top-floor apartment set within a handsome period building in the heart of Notting Hill.

Ideally positioned just off Chepstow Road, the apartment sits within a short walk of Westbourne Grove's acclaimed boutiques, cafés and restaurants, as well as the world-famous Portobello Road. Transport links are excellent, with Westbourne Park (Circle and Hammersmith & City lines) and Notting Hill Gate (Central and District lines) both close by, offering swift and easy access across London.







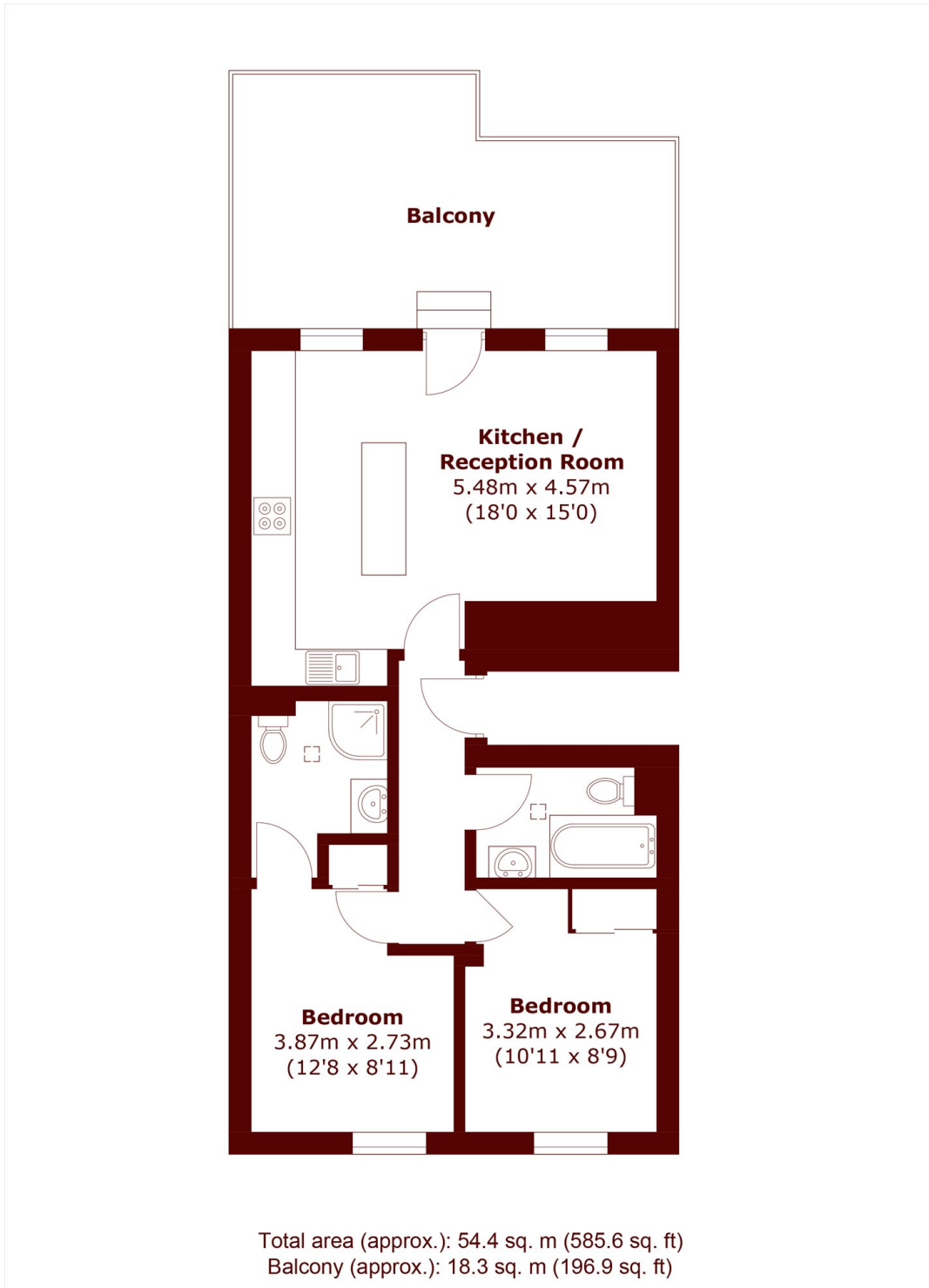
FURTHER DETAILS

The bright and airy interior features solid wood flooring throughout and a stylish open-plan kitchen and reception room, which opens directly onto a spectacular private roof terrace perfect for entertaining or simply enjoying the surroundings.

The apartment offers two generous double bedrooms with extensive built-in storage and two sleek, contemporary bathrooms.



STEP INSIDE TALBOT ROAD



Notting Hill
020 7313 2890

Energy Rating: D We aim to make our particulars both accurate and reliable. However, they are not guaranteed; nor do they form part of an offer or contract. If you require clarification on any points then please contact us, especially if you're traveling some distance to view. Please note that appliances and heating systems have not been tested and therefore no warranties can be given as to their good working order

MARSH &
PARSONS