



## SPRINGFIELD LANE, NW6

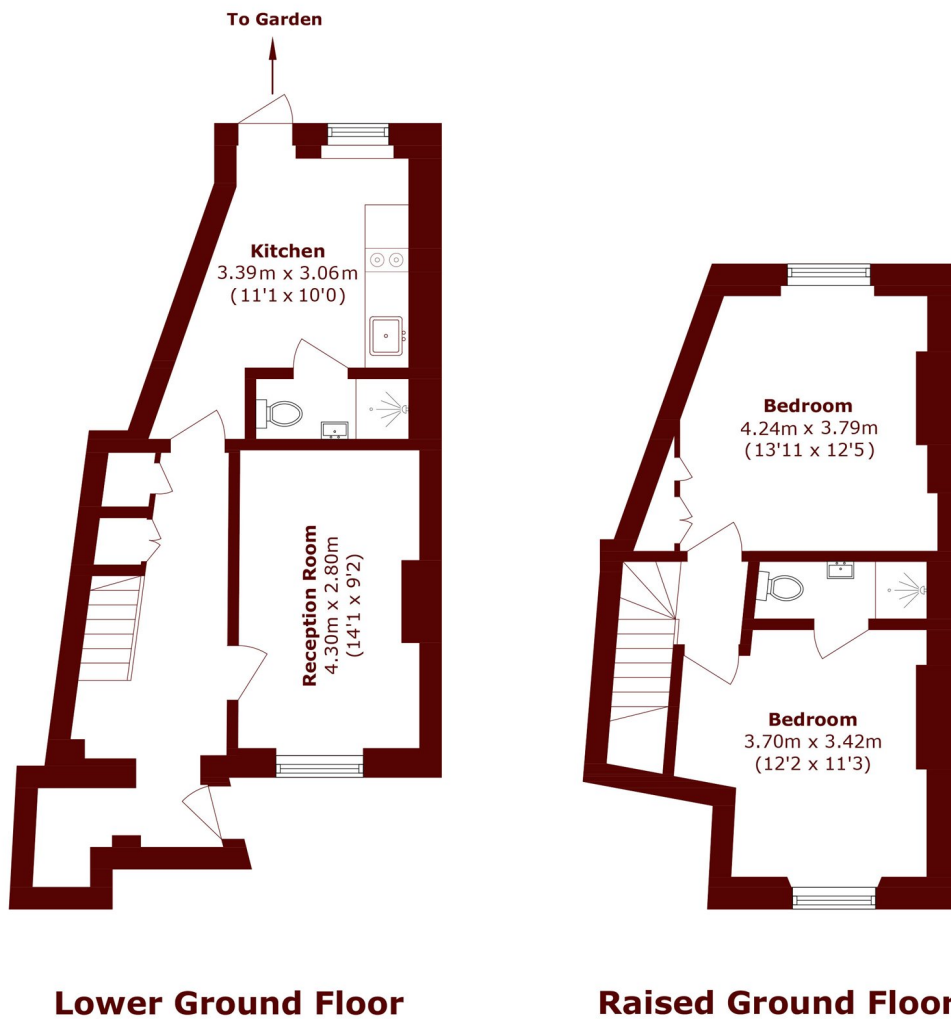
£540,000

Arranged over the lower ground and raised ground floors, this two bedroom duplex maisonette offers approximately 711 sq ft of accommodation, with a private entrance and rear courtyard garden.

Duplex maisonette  
Period conversion  
Two bedrooms

Private courtyard garden  
Approximately 711sq ft  
Chain free

# STEP INSIDE SPRINGFIELD LANE



Total area (approx.): 66.1 sq. m (711.5 sq. ft)

Little Venice  
020 7993 3050

Energy Rating: D We aim to make our particulars both accurate and reliable. However, they are not guaranteed; nor do they form part of an offer or contract. If you require clarification on any points then please contact us, especially if you're traveling some distance to view. Please note that appliances and heating systems have not been tested and therefore no warranties can be given as to their good working order

MARSH &  
PARSONS