



THORNTON AVENUE, W4

£9,500 per month

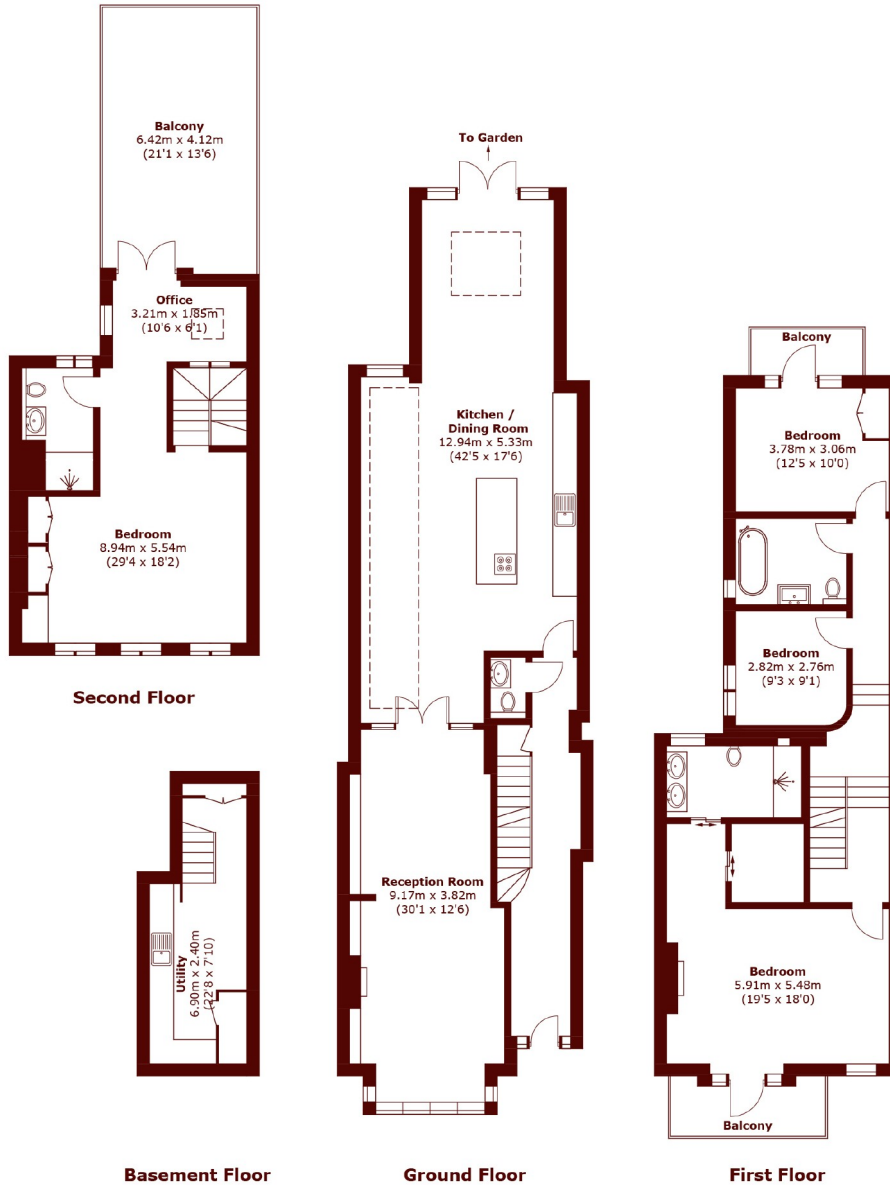
Situated in the heart of Chiswick is this exquisite four-bedroom residence offering a rare combination of modern luxury, space, and state-of-the-art technology.

- Four double bedrooms,
- Smart integrated system
- Landscaped garden & private road
- Excellent location
- terrace

@marshandparsons
marshandparsons.co.uk



STEP INSIDE THORNTON AVENUE



Total area (approx.): 243.2 sq. m (2,623.6 sq. ft)
Balcony: 32.9 sq. m (354.1 sq. ft)

Chiswick
020 8629 0900

Energy Rating: C We aim to make our particulars both accurate and reliable. However, they are not guaranteed; nor do they form part of an offer or contract. If you require clarification on any points then please contact us, especially if you're traveling some distance to view. Please note that appliances and heating systems have not been tested and therefore no warranties can be given as to their good working order

MARSH &
PARSONS