



CLARENCE GATE GARDENS, NW1

£1,400,000

Three bedrooms
Share of freehold
Modern throughout
Private balcony
Prime location
Porter

@marshandparsons
marshandparsons.co.uk

MARSH &
PARSONS



ABOUT THE PROPERTY

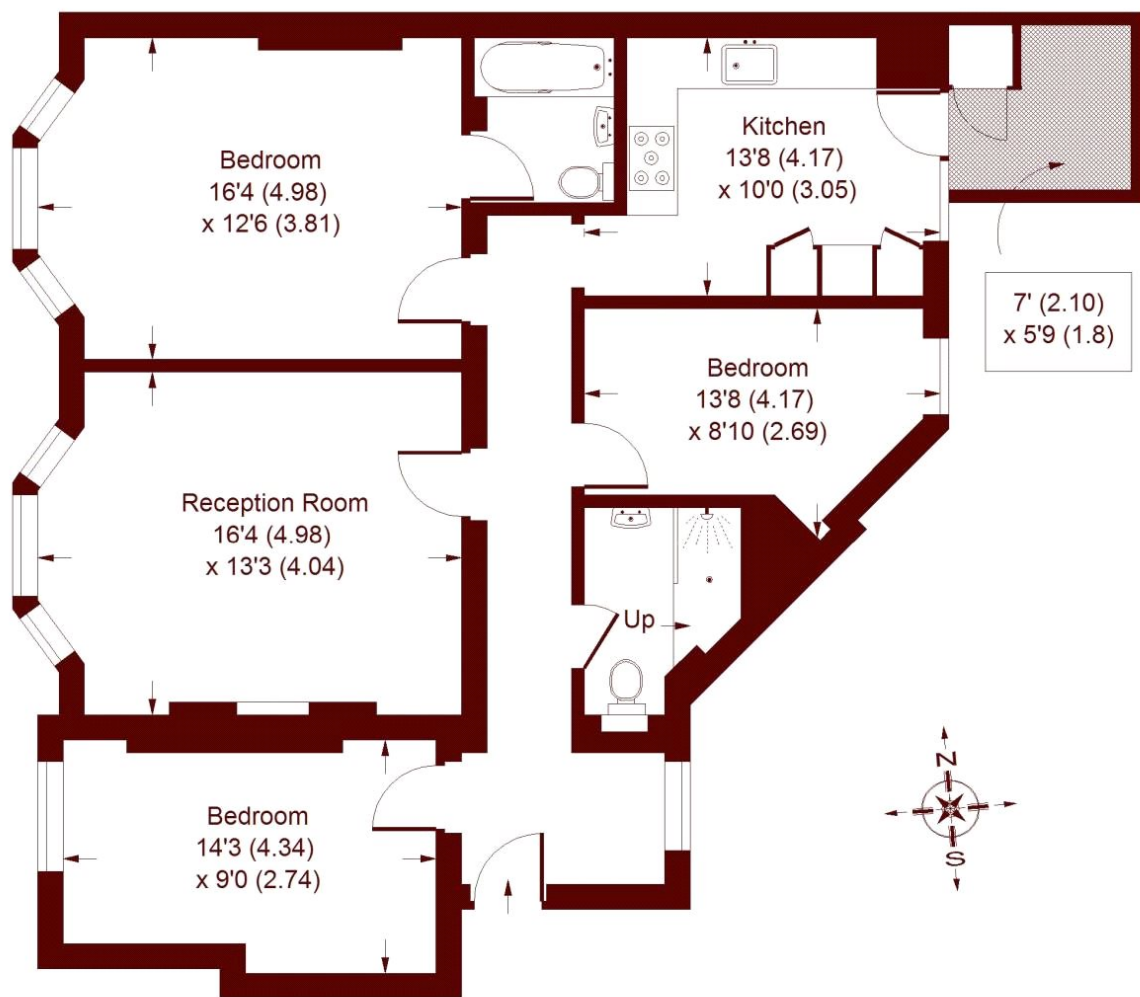
A beautifully finished three-bedroom, two-bathroom raised ground floor apartment set within the prestigious Clarence Gate Gardens. Finished to a high specification throughout, the property offers a bright reception room, three bedrooms, including a principal bedroom with en-suite, a contemporary family bathroom, and a spacious separate bespoke kitchen with integrated appliances, both bathrooms and kitchen benefit with under floor heating. The apartment further benefits from a private balcony off the kitchen and an additional front-facing balcony.

Clarence Gate Gardens is a classical example of an Edwardian mansion block occupying it's own street running parallel to Baker Street.



STEP INSIDE CLARENCE GATE GARDENS

Clarence Gate Gardens, NW1



RAISED GROUND FLOOR

Whilst every attempt has been made to ensure the accuracy of the floor plan, measurements are approximate and not to scale. No guarantee is given on the total square footage of the property quoted on the plan. Figures given are for guidance. Plan is for illustration purposes only.

Marylebone & Mayfair
020 7935 1775

Energy Rating: We aim to make our particulars both accurate and reliable. However, they are not guaranteed; nor do they form part of an offer or contract. If you require clarification on any points then please contact us, especially if you're traveling some distance to view. Please note that appliances and heating systems have not been tested and therefore no warranties can be given as to their good working order

MARSH &
PARSONS