



NOWELL ROAD, SW13

£1,450,000

Unique corner plot
Four bedrooms
Stylishly presented
Potential to extend (stpp)
South facing garden
North Barnes

@marshandparsons
marshandparsons.co.uk

MARSH &
PARSONS

ABOUT THE PROPERTY

Marsh & Parsons are delighted to bring to the market this four-bedroom double fronted family home, quietly nestled on a generous corner plot on the sought-after Nowell Road, located moments from Hammersmith Bridge.

This exceptional, larger-than-average end-of-terrace home has been thoughtfully upgraded in recent years to create a beautifully presented family residence, offering an abundance of natural light, versatile living space and a superb south-facing wrap-around garden. The accommodation is predominantly arranged over two floors.

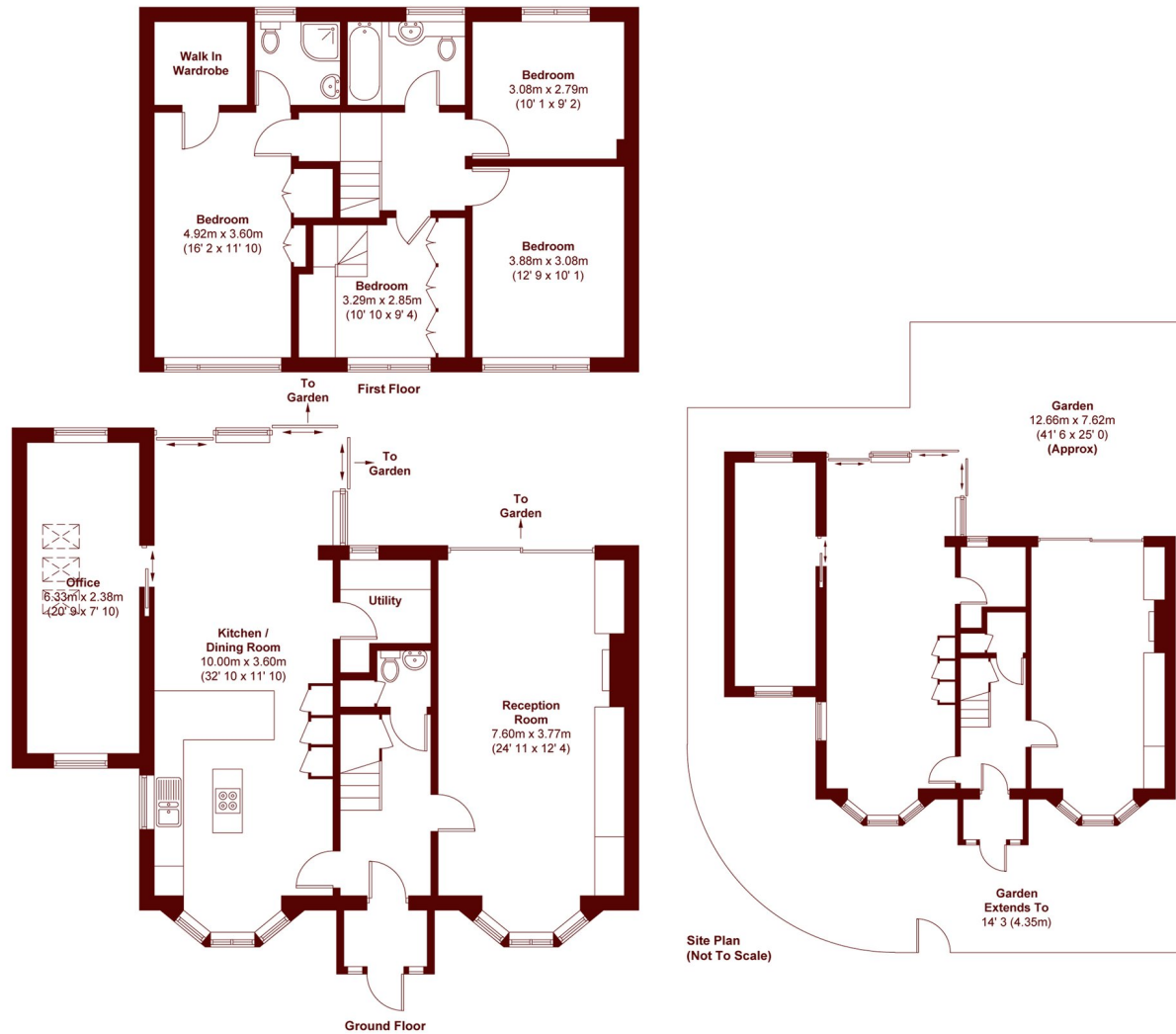








STEP INSIDE NOWELL ROAD



APPROX. GROSS INTERNAL FLOOR AREA
1756 SQFT / 163.1 SQM

Barnes & East Sheen
020 8563 8333

Energy Rating: C We aim to make our particulars both accurate and reliable. However, they are not guaranteed; nor do they form part of an offer or contract. If you require clarification on any points then please contact us, especially if you're traveling some distance to view. Please note that appliances and heating systems have not been tested and therefore no warranties can be given as to their good working order

**MARSH &
PARSONS**