



## CRANWORTH GARDENS, SW9

£750,000

Two/Three bedrooms  
First floor  
Balcony  
Tree-lined road  
Victorian mansion block  
In excess of 1,000 sq ft

@marshandparsons  
marshandparsons.co.uk

MARSH &  
PARSONS

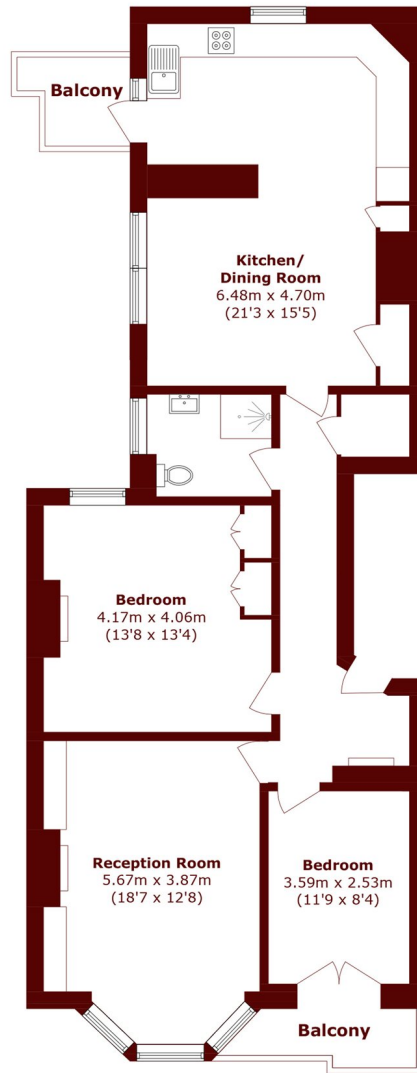


# ABOUT THE PROPERTY

A spacious two/three bedroom apartment situated on the first floor of this elegant Victorian mansion block, offering beautifully presented lateral accommodation extending to over 1,000 sq ft. With generous proportions, high ceilings and an abundance of natural light throughout, the property combines period charm with contemporary living. The impressive front facing room features a stunning bay window, creating a bright and inviting space. A second/third bedroom is also positioned to the front of the property and benefits from a Juliet balcony. To the rear, a spacious kitchen/family room provides an excellent entertaining area with direct access to a private balcony.



# STEP INSIDE CRANWORTH GARDENS



Total area (approx.): 94.1 sq. m (1012.8 sq. ft)  
Balcony area (approx.): 5.9 sq. m (63.5 sq. ft)

**Kennington**  
020 7587 1533

Energy Rating: C We aim to make our particulars both accurate and reliable. However, they are not guaranteed; nor do they form part of an offer or contract. If you require clarification on any points then please contact us, especially if you're traveling some distance to view. Please note that appliances and heating systems have not been tested and therefore no warranties can be given as to their good working order

**MARSH &  
PARSONS**