



## KINGSTON ROAD, SW19

£3,995 per month

Two bedrooms  
Two bathrooms  
High specification  
Surround sound speakers  
Garden  
Energy rating: c

@marshandparsons  
marshandparsons.co.uk

MARSH &  
PARSONS



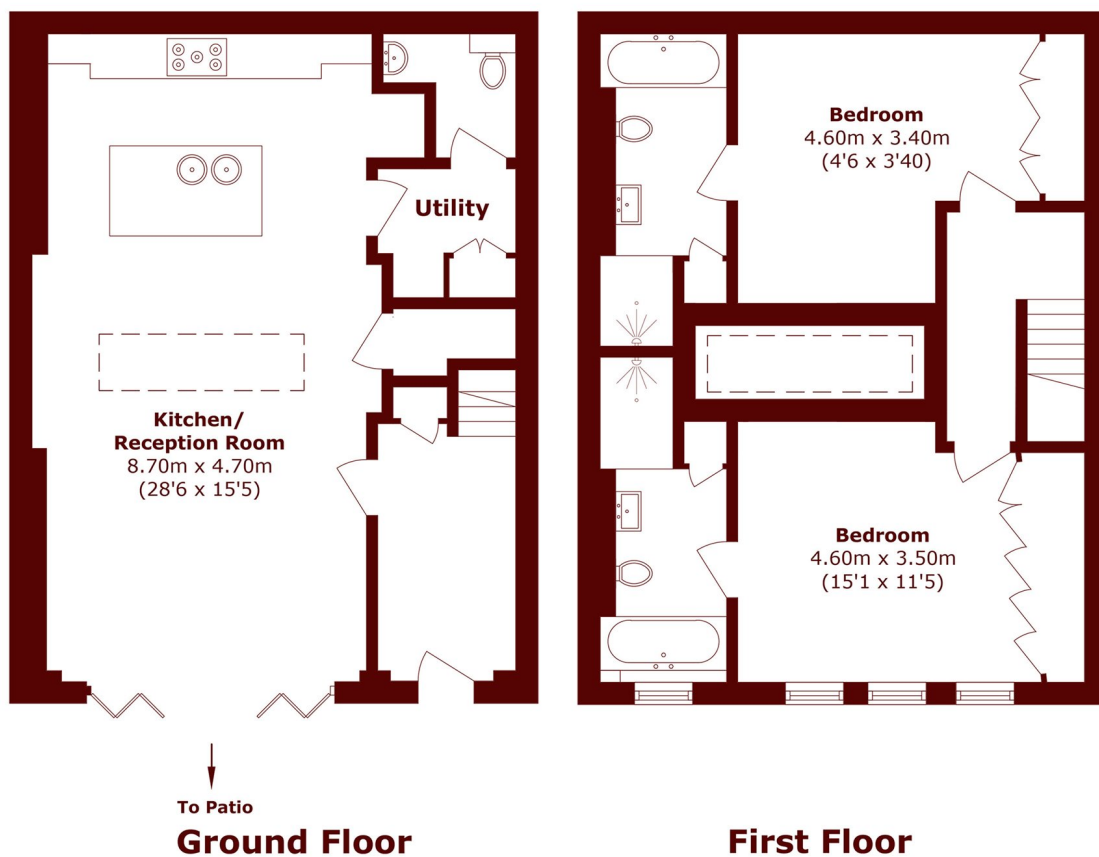
# ABOUT THE PROPERTY

A well-presented contemporary two bedroom house. The property offers an open plan kitchen/dining room, reception room, two double bedrooms, two en suite bathrooms; private garden and off-street parking.

Located moments from South Wimbledon underground station (Northern line) and less than a mile from Wimbledon station (District line and National Rail).



# STEP INSIDE KINGSTON ROAD



Total area (approx.): 113.0 sq. m (1216.3 sq. ft)

Wimbledon  
020 8879 6661

Energy Rating: C We aim to make our particulars both accurate and reliable. However, they are not guaranteed; nor do they form part of an offer or contract. If you require clarification on any points then please contact us, especially if you're traveling some distance to view. Please note that appliances and heating systems have not been tested and therefore no warranties can be given as to their good working order

MARSH &  
PARSONS