



HOLLAND PARK GARDENS, W14

£2,450,000

Four Bedrooms
Second Floor
Lift
Two Reception Rooms
Three Bathrooms
Wonderful Location

@marshandparsons
marshandparsons.co.uk

MARSH &
PARSONS

ABOUT THE PROPERTY

Offers in excess of £2,450,000. A beautiful four bedroom lateral apartment (with lift access) brimming with period features in a wonderful Holland Park location.

Holland Park Gardens is conveniently situated close to the first class amenities of Holland Park Avenue, including public transportation (buses and the Central Line Underground), and is conveniently located within walking distance of Westfield shopping and dining complex. In addition, the restaurants and independent shops of Notting Hill are within easy reach. The property also benefits from easy access to the ever-popular open spaces of Holland Park.





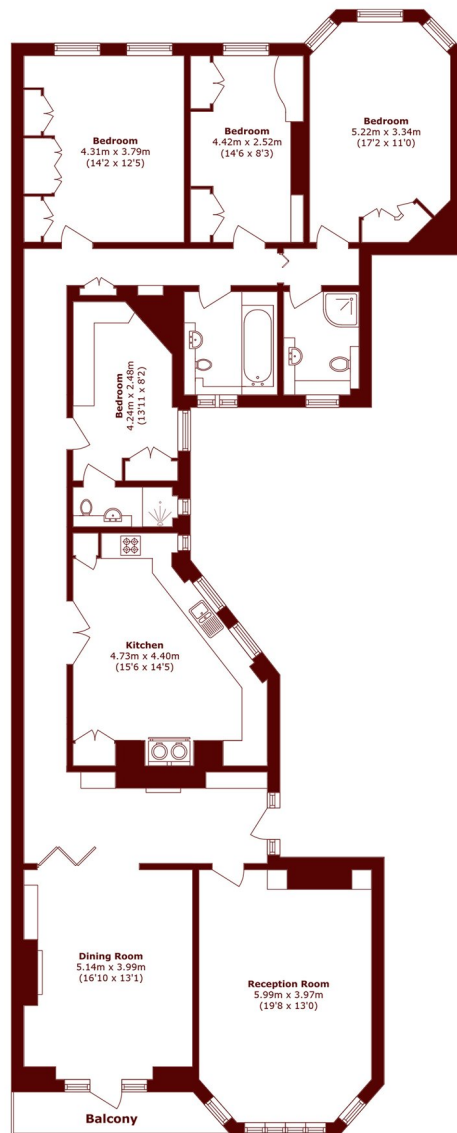


FURTHER DETAILS

The property is situated on the second floor of a handsome Victorian mansion block and comprises: entrance hall, elegant reception, separate dining room with a feature fireplace, spacious kitchen/breakfast room complete with a Rayburn aga, self-contained principal bedroom benefiting from built-in wardrobes and en suite shower room, two further bedrooms and a family bathroom and a single bedroom/study with en suite shower room. The front of the building offers views of Cardinal Vaughan Memorial School, while the rear provides the outstanding vista of Holland Park Lawn Tennis Club.



STEP INSIDE HOLLAND PARK GARDENS



Second Floor

Total area (approx.): 173.6 sq. m (1868.6 sq. ft)

Balcony area (approx.): 3.6 sq. m (38.7 sq. ft)

Holland Park
020 7605 6890

Energy Rating: We aim to make our particulars both accurate and reliable. However, they are not guaranteed; nor do they form part of an offer or contract. If you require clarification on any points then please contact us, especially if you're traveling some distance to view. Please note that appliances and heating systems have not been tested and therefore no warranties can be given as to their good working order

**MARSH &
PARSONS**