



KERSFIELD ROAD, SW15

£2,950 per month

Modern apartment
Two bedroom
Two bathroom
Natural light throughout
Purpose built development
Energy rating: d

@marshandparsons
marshandparsons.co.uk

MARSH &
PARSONS



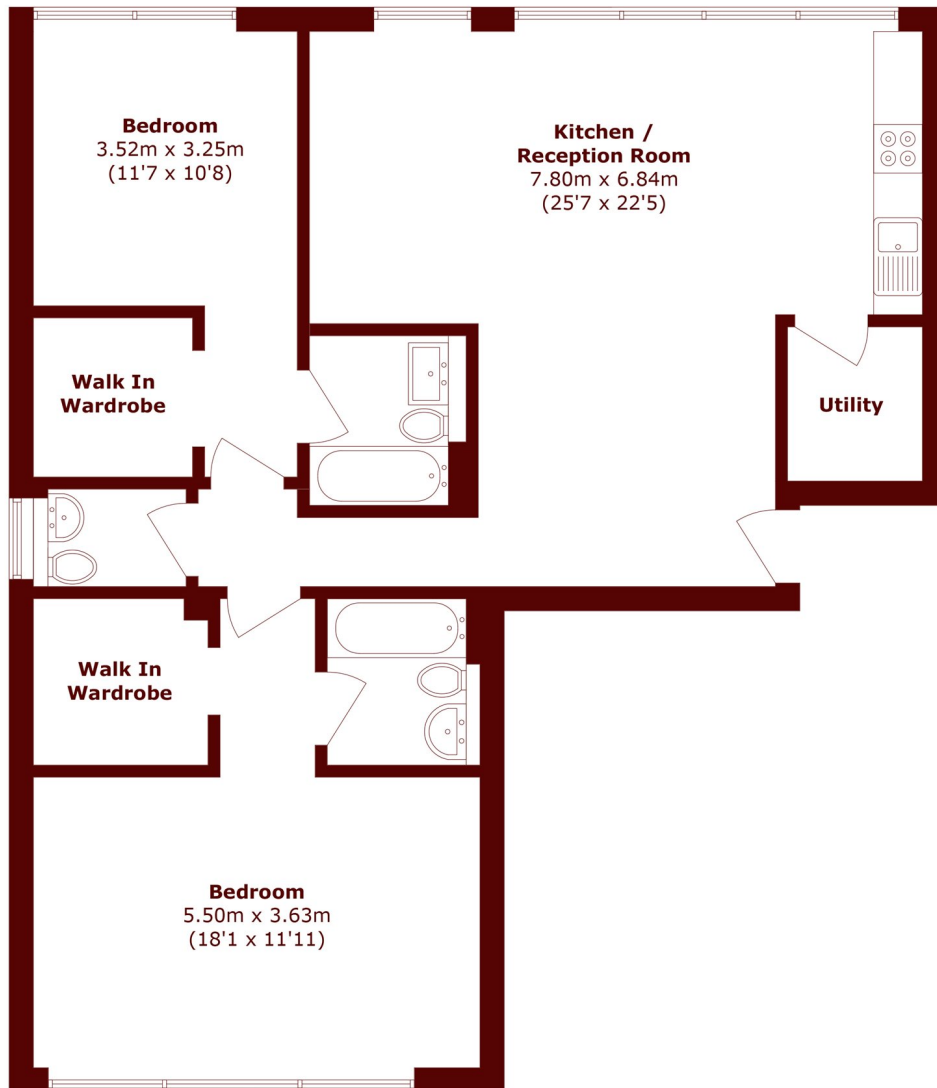
ABOUT THE PROPERTY

A modern two bedroom apartment located on the fifth floor (lift access) in a purpose built development moments from Putney Heath.

This modern apartment comprises primary bedroom with walk in wardrobes and en-suite, second bedroom with walk in wardrobes and en-suite, one w/c, large reception room with fully equipped kitchen, and separate utility room.



STEP INSIDE KERSFIELD ROAD



Total area (approx.): 105.2 sq. m (1132.3 sq. ft)

Barnes & East Sheen
020 8879 6661

Energy Rating: D We aim to make our particulars both accurate and reliable. However, they are not guaranteed; nor do they form part of an offer or contract. If you require clarification on any points then please contact us, especially if you're traveling some distance to view. Please note that appliances and heating systems have not been tested and therefore no warranties can be given as to their good working order

**MARSH &
PARSONS**