



BROMPTON PARK CRESCENT, SW6

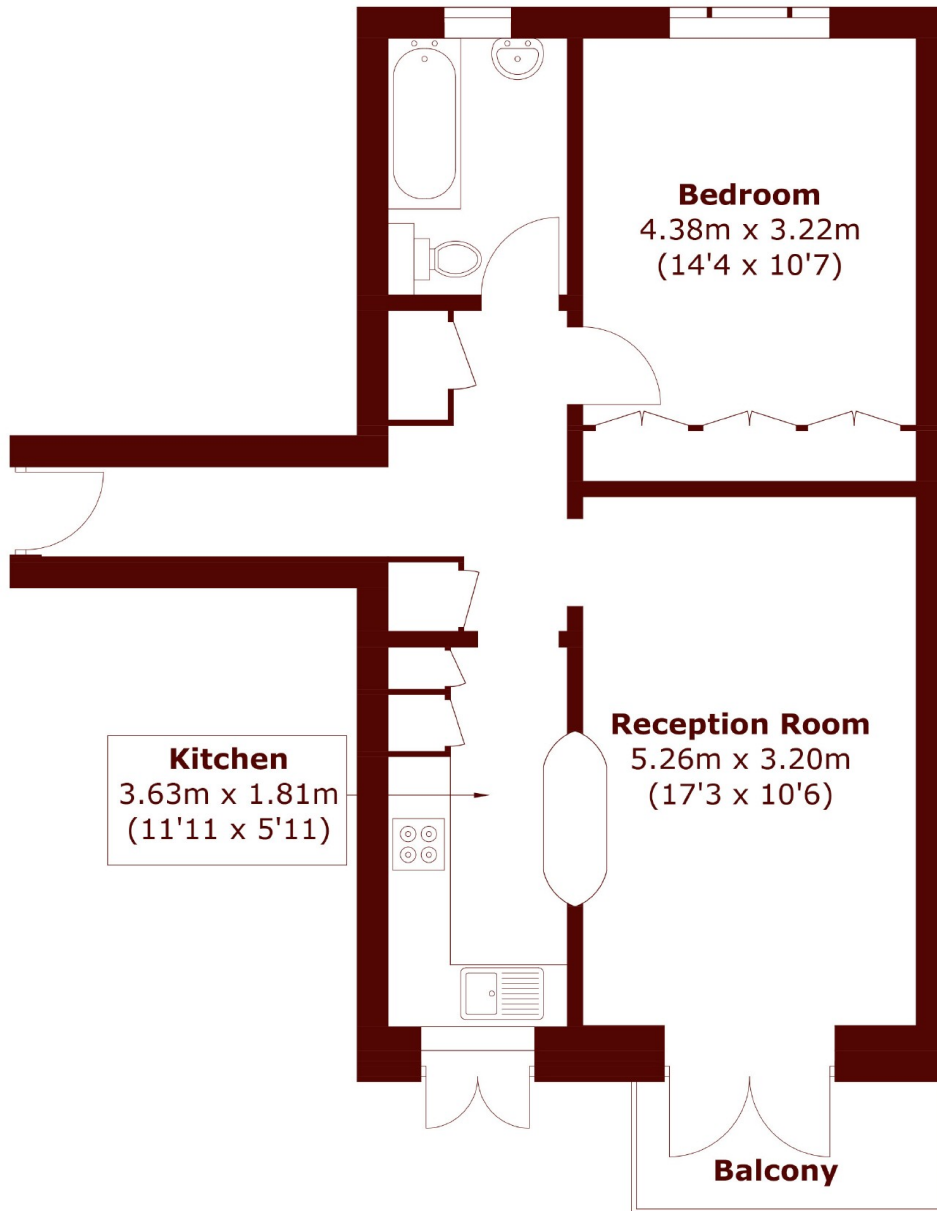
£465,000

This large one bed apartment is located in an exclusive gated development in Fulham with communal gardens and parking. Residents also have use of on-site leisure centre and swimming pool.

Long lease
Private gated
Swimming Pool

Parking
Built in storage
Energy rating: c

STEP INSIDE BROMPTON PARK CRESCENT



Total area (approx.): 52.4 sq. m (564.0 sq. ft)

Fulham
020 7736 9822

Energy Rating: C We aim to make our particulars both accurate and reliable. However, they are not guaranteed; nor do they form part of an offer or contract. If you require clarification on any points then please contact us, especially if you're traveling some distance to view. Please note that appliances and heating systems have not been tested and therefore no warranties can be given as to their good working order

**MARSH &
PARSONS**