



YORK ROAD, SW11

£450,000

- One double bedroom
- Desirable development
- Close to Thames
- Great links
- Private balcony
- Chain free

@marshandparsons
marshandparsons.co.uk

MARSH &
PARSONS



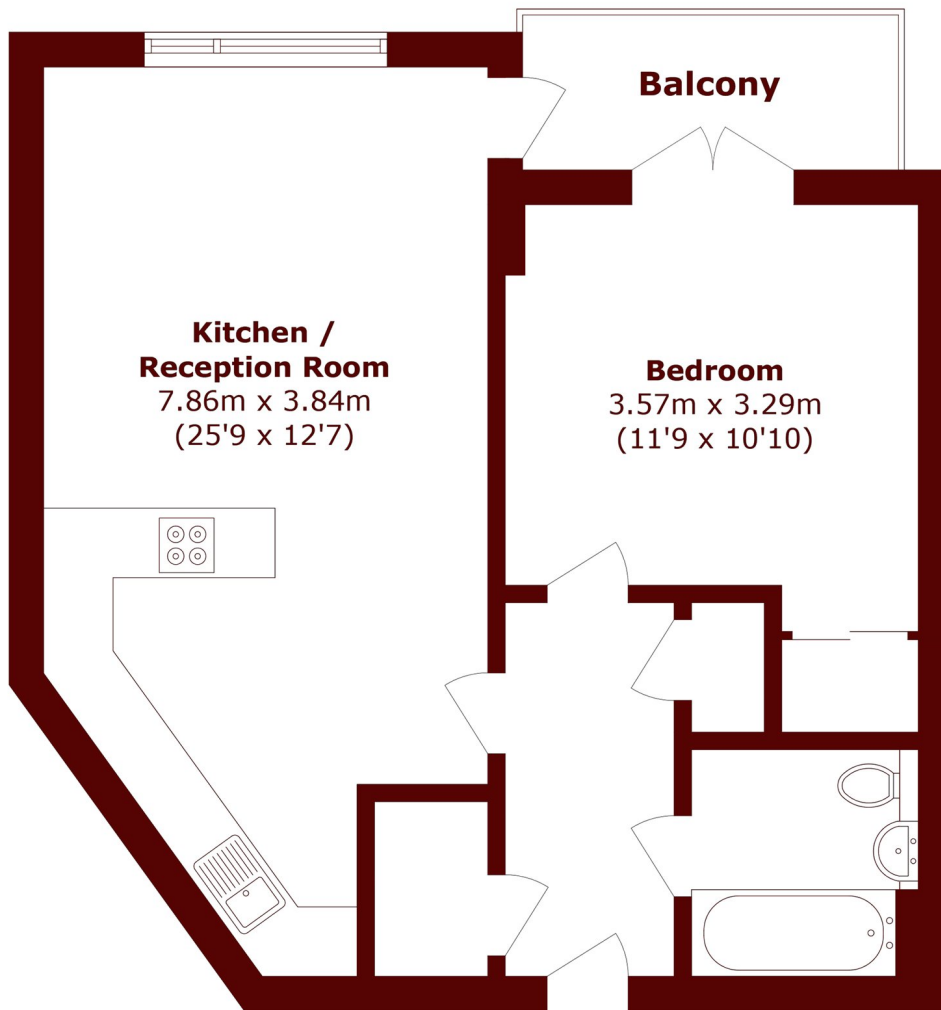
ABOUT THE PROPERTY

A one double bedroom modern build apartment close to the river, presented in excellent condition throughout. The spacious integrated wrap around kitchen is perfect for entertaining, while the winter balcony offers an extension to the already sizeable living space.

Palmitine House is conveniently located close to the river and Battersea Square, offering great walks and a fine selection of local wine bars, restaurants and coffee shops. Clapham Junction station is just a short walk away, providing excellent links in and out of town.



STEP INSIDE YORK ROAD



Total area (approx.): 52.2 sq. m (561.8 sq. ft)
Balcony total (approx.): 4.3 sq. m (46.2 sq. ft)

Battersea
020 7326 9920

Energy Rating: B We aim to make our particulars both accurate and reliable. However, they are not guaranteed; nor do they form part of an offer or contract. If you require clarification on any points then please contact us, especially if you're traveling some distance to view. Please note that appliances and heating systems have not been tested and therefore no warranties can be given as to their good working order

**MARSH &
PARSONS**