



## HIGH STREET WIMBLEDON, SW19

£2,500 per month

Two double bedrooms  
Modern interior  
Permit parking  
Double glazing  
Close to amenities  
Energy rating: c

@marshandparsons  
marshandparsons.co.uk

MARSH &  
PARSONS



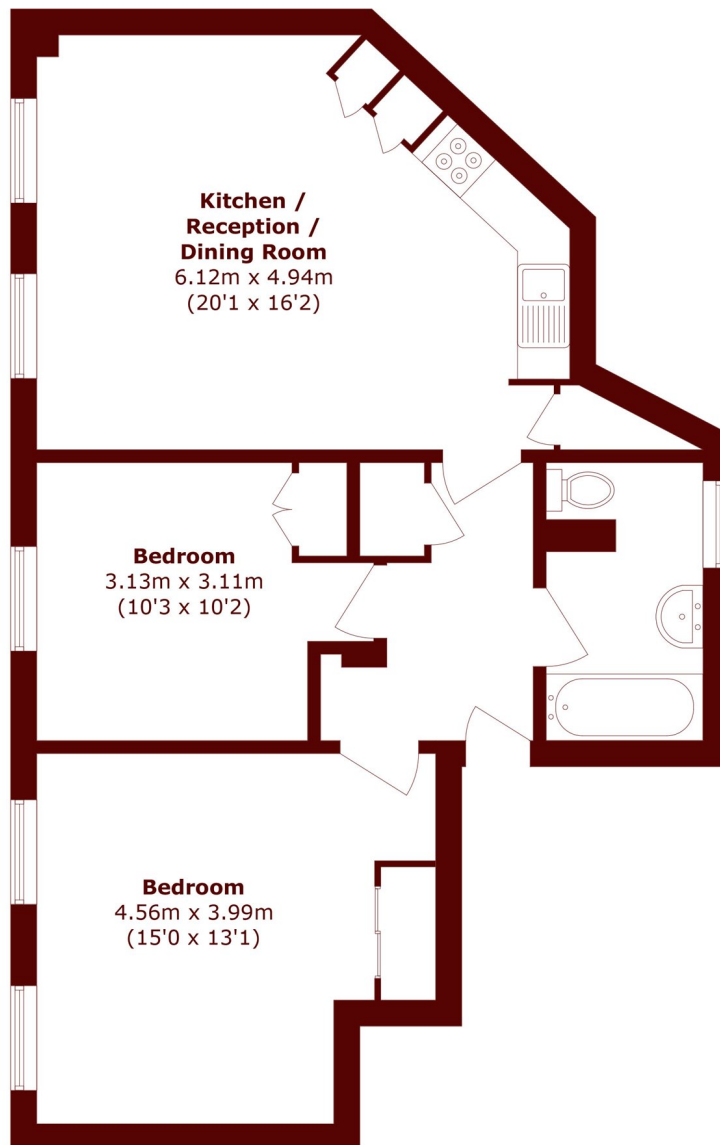
# ABOUT THE PROPERTY

A two double bedroom, first floor apartment which comes complete with a modern open plan kitchen / living room and a bathroom.

The property is located in the heart of Wimbledon Village with its chic boutiques, restaurants and bars.



# STEP INSIDE HIGH STREET WIMBLEDON



Total area (approx.): 71.1 sq. m (765.3 sq. ft)

**Wimbledon**  
020 8879 6661

Energy Rating: C We aim to make our particulars both accurate and reliable. However, they are not guaranteed; nor do they form part of an offer or contract. If you require clarification on any points then please contact us, especially if you're traveling some distance to view. Please note that appliances and heating systems have not been tested and therefore no warranties can be given as to their good working order

**MARSH &  
PARSONS**