



## ST. MARYS TERRACE, W2

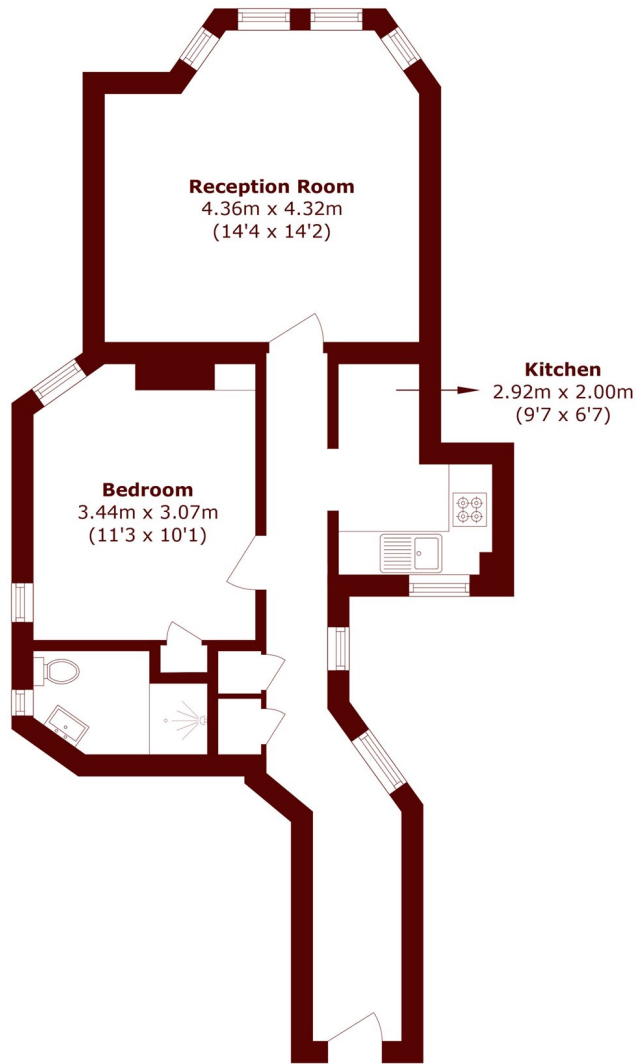
£480,000

A first floor apartment set within an attractive period building, offering a bright reception room, spacious double bedroom, separate kitchen and modern en-suite bathroom.

First Floor Apartment  
One Bedroom  
High Ceilings

Excellent Condition  
Seperate Kitchen  
Chain Free

# STEP INSIDE ST. MARYS TERRACE



## First Floor

Total area (approx.): 50.5 sq. m (543.5 sq. ft)

Little Venice  
020 7993 3050

Energy Rating: We aim to make our particulars both accurate and reliable. However, they are not guaranteed; nor do they form part of an offer or contract. If you require clarification on any points then please contact us, especially if you're traveling some distance to view. Please note that appliances and heating systems have not been tested and therefore no warranties can be given as to their good working order

MARSH &  
PARSONS