



NEWSTEAD WAY, SW19

£5,500 per month

Newly refurbished
Brand new kitchen
Five bedrooms
Three bathrooms
Private garden
Energy rating: d

@marshandparsons
marshandparsons.co.uk

MARSH &
PARSONS



ABOUT THE PROPERTY

A newly refurbished five bedroom townhouse situated close to the All England Lawn Tennis Club. Offering a brand new kitchen / dining room, downstairs reception room, principal bedroom with en suite shower room, three further bedrooms, two further bathrooms, a fifth bedroom / reception room. The property has a private garden and off-street parking for several cars and garage.

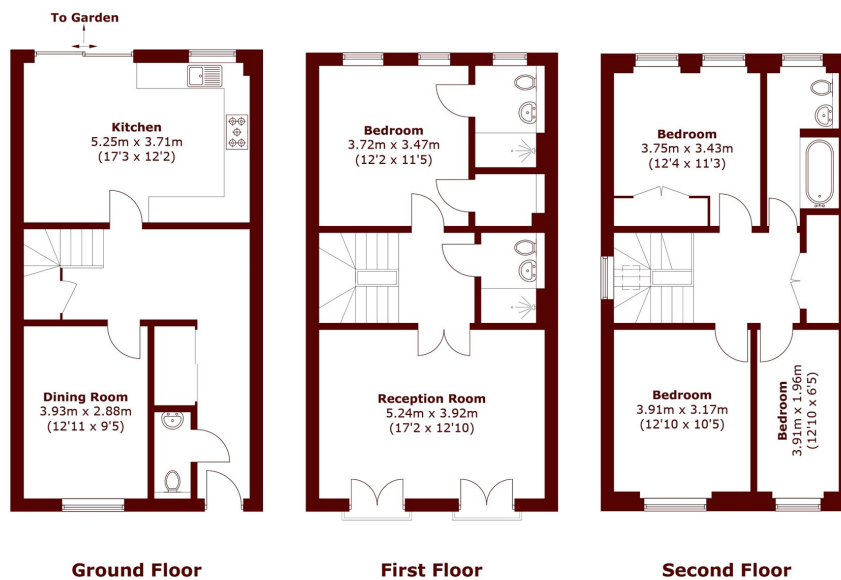
The property is within walking distance of Wimbledon Village, Wimbledon town centre and station, and Southfields tube station.



STEP INSIDE NEWSTEAD WAY



(Not Shown In Actual Location / Orientation)



Total area (approx.): 158.7 sq. m (1,708.0 sq. ft)

Garage (approx.): 23.4 sq. m (251.8 sq. ft)

Wimbledon
020 8879 6661

Energy Rating: D We aim to make our particulars both accurate and reliable. However, they are not guaranteed; nor do they form part of an offer or contract. If you require clarification on any points then please contact us, especially if you're traveling some distance to view. Please note that appliances and heating systems have not been tested and therefore no warranties can be given as to their good working order

MARSH &
PARSONS