



FULHAM PALACE ROAD, SW6

£2,550 per week

A beautifully presented and spacious first floor flat set within an attractive Victorian building. The property offers a bright reception room with an open-plan kitchen to the front, filled with natural light, while to the rear

Two bedrooms

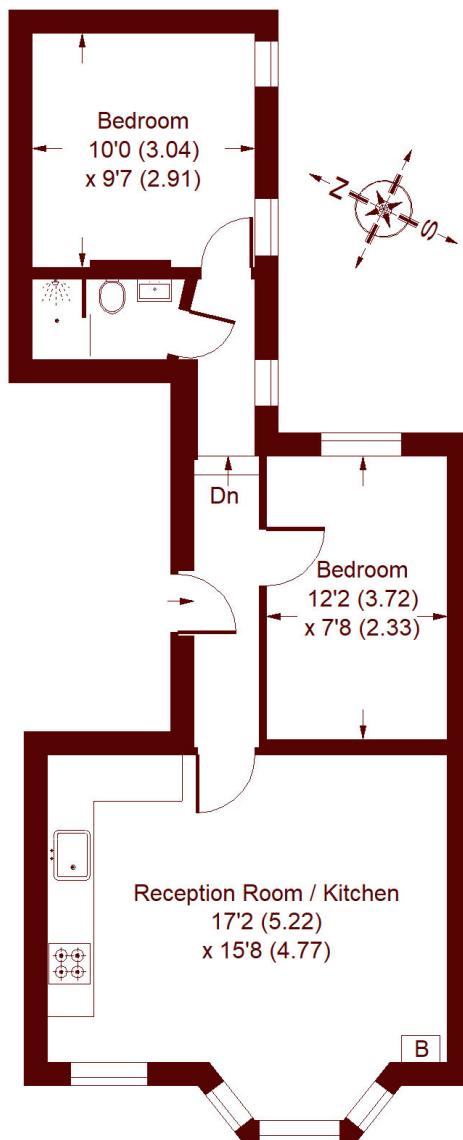
Opposite Bishops Park

Open plan living room kitchen. Short walk to underground

STEP INSIDE FULHAM PALACE ROAD

Fulham Palace Road, SW6

APPROX. GROSS INTERNAL FLOOR AREA
521 SQFT / 48.4 SQM



FIRST FLOOR

Whilst every attempt has been made to ensure the accuracy of the floor plan, measurements are approximate and not to scale. No guarantee is given on the total square footage of the property quoted on the plan. Figures given are for guidance. Plan is for illustration purposes only, not to be used for valuations.

Bishops Park
020 7368 2480

Energy Rating: We aim to make our particulars both accurate and reliable. However, they are not guaranteed; nor do they form part of an offer or contract. If you require clarification on any points then please contact us, especially if you're traveling some distance to view. Please note that appliances and heating systems have not been tested and therefore no warranties can be given as to their good working order

**MARSH &
PARSONS**