



FLEETWOOD ROAD, NW10

£4,200 per month

This five bedroom two bathroom semi detached family home, spread over two floors offers a spacious and entertaining living space with an integrated kitchen, private rear garden and off street parking.

Five bedrooms

Two bathrooms

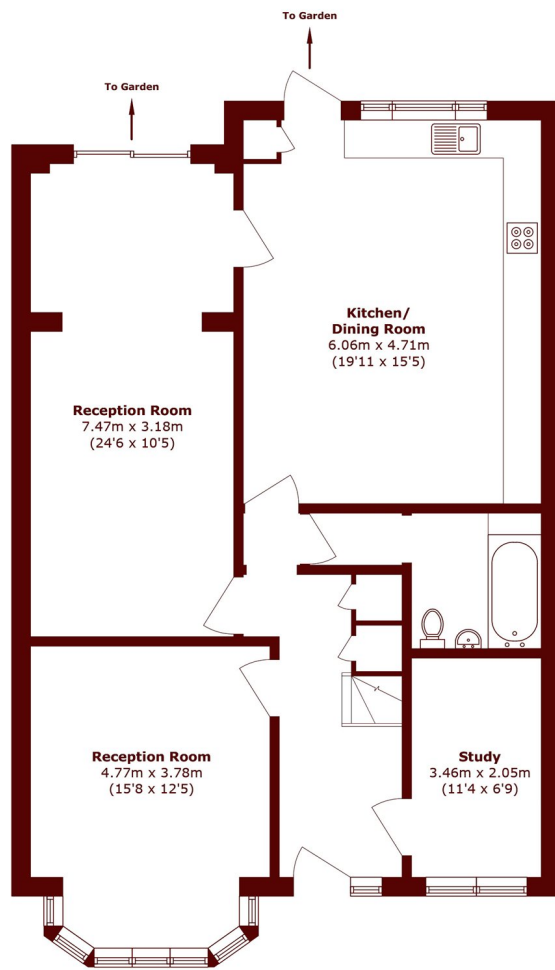
Two reception rooms

Semi detached house

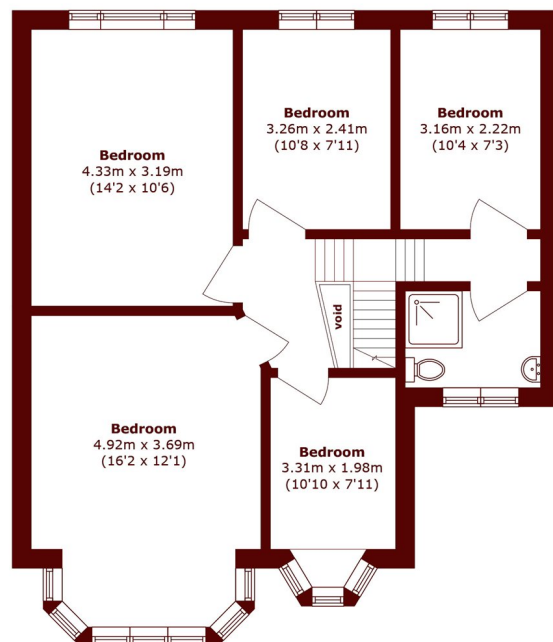
Garden

Off street parking

STEP INSIDE FLEETWOOD ROAD



Ground Floor



First Floor

Total area (approx.): 160.5 sq. m (1727.6 sq. ft)
(Excluding Void)

Willesden Green
020 8939 1780

Energy Rating: C We aim to make our particulars both accurate and reliable. However, they are not guaranteed; nor do they form part of an offer or contract. If you require clarification on any points then please contact us, especially if you're traveling some distance to view. Please note that appliances and heating systems have not been tested and therefore no warranties can be given as to their good working order

**MARSH &
PARSONS**