



GLOUCESTER PLACE, NW1

£1,100,000

Two large double bedrooms
Long lease
Top floor (with lift)
Air conditioning
Beautiful period conversion
Wooden floors

@marshandparsons
marshandparsons.co.uk

MARSH &
PARSONS



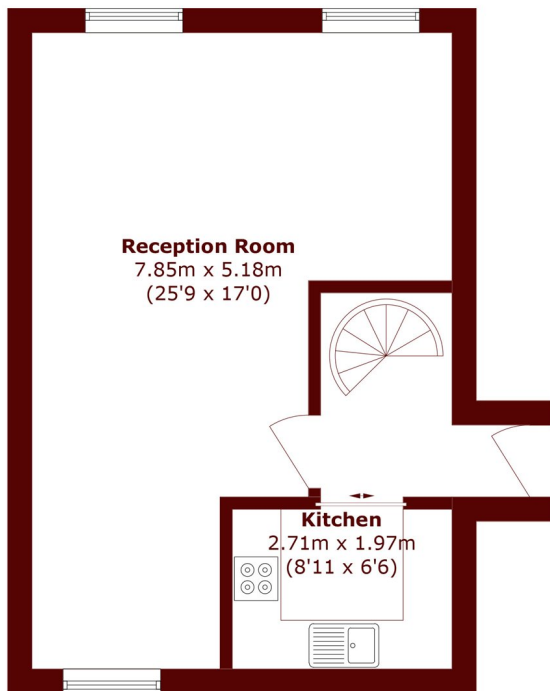
ABOUT THE PROPERTY

Finished to the owner's specification, this immaculately presented two-bedroom duplex apartment is split over the third and fourth floors (with lift) of a beautiful period conversion and comprises a large and bright L-shaped reception room with ample space for dining and entertaining and a separate fitted kitchen with built in appliances including a dishwasher. Upstairs in the property are two large double bedrooms with built in storage and a contemporary bathroom. This dual aspect property also benefits from double glazing and air conditioning with stunning wood floors throughout.

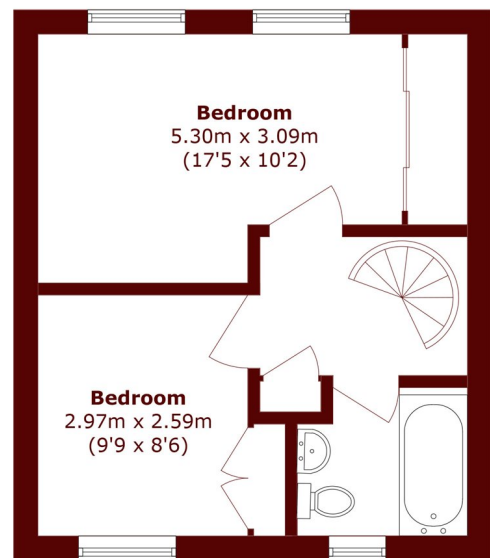
Gloucester Place is minutes away from Regent's Park, and close to the Baker Street and Marylebone stations.



STEP INSIDE GLOUCESTER PLACE



Third Floor



Fourth Floor

Total area (approx.): 74.3 sq. m (799.7 sq. ft)

Marylebone & Mayfair
020 7935 1775

Energy Rating: C We aim to make our particulars both accurate and reliable. However, they are not guaranteed; nor do they form part of an offer or contract. If you require clarification on any points then please contact us, especially if you're traveling some distance to view. Please note that appliances and heating systems have not been tested and therefore no warranties can be given as to their good working order

**MARSH &
PARSONS**