



## ELM GROVE, SW19

£1,800 per month

One bedroom  
Recently refurbished  
Off-street parking  
Lift  
Close to station  
Energy rating: c

@marshandparsons  
marshandparsons.co.uk

MARSH &  
PARSONS



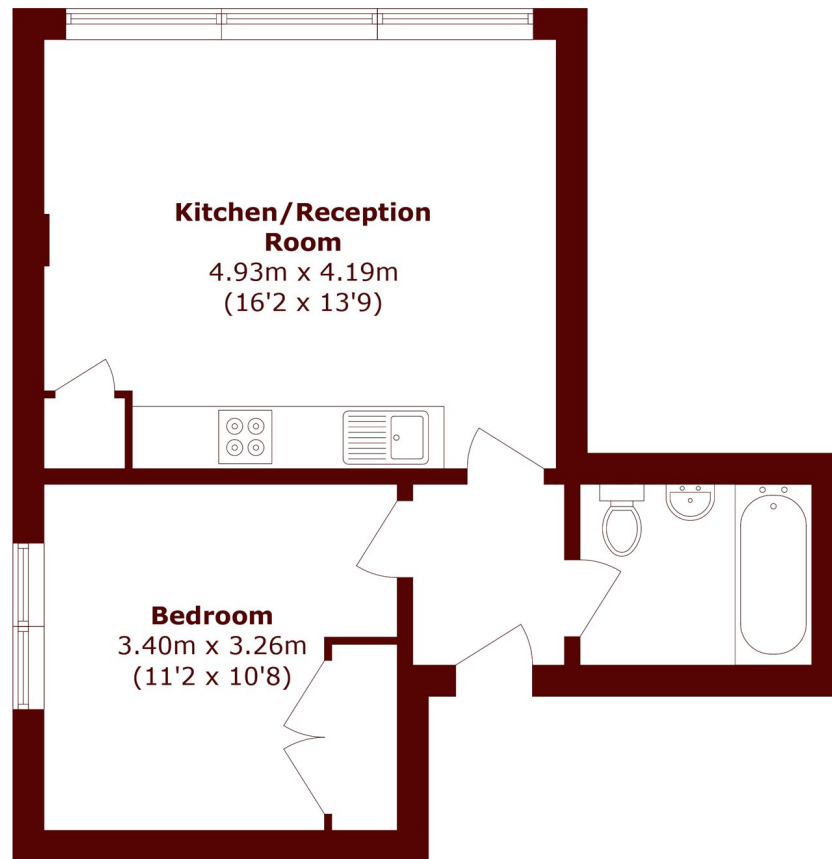
# ABOUT THE PROPERTY

A one bedroom apartment within this secure modern development offering an open plan modern kitchen / reception room with wooden flooring, a double bedroom with built in wardrobes and a family bathroom.

The property is located half a mile from Wimbledon Station.



# STEP INSIDE ELM GROVE



Total area (approx.): 39.3 sq. m (423.0 sq. ft)

Wimbledon  
020 8879 6661

Energy Rating: C We aim to make our particulars both accurate and reliable. However, they are not guaranteed; nor do they form part of an offer or contract. If you require clarification on any points then please contact us, especially if you're traveling some distance to view. Please note that appliances and heating systems have not been tested and therefore no warranties can be given as to their good working order

MARSH &  
PARSONS