



## TURRET GROVE, SW4

£1,700,000

South-facing garden

Four bedrooms

1,903 sq ft

Close to Clapham Common

Spacious kitchen/dining room

Energy rating: d

@marshandparsons  
marshandparsons.co.uk

MARSH &  
PARSONS

# ABOUT THE PROPERTY

A stunning Victorian family home with four bedrooms, two reception rooms, spacious kitchen dining room, and a south-facing private garden. Ideally located on a prime street in Clapham Old Town, close to Clapham Common.

Arranged over three floors this beautifully presented Victorian home features two generous reception rooms and a spacious kitchen/dining room opening onto a beautiful, south-facing garden. It offers an ideal balance of family living and entertaining space. Four well-proportioned bedrooms, two bathrooms and a useful cellar, the home is perfectly suited to modern family life while retaining the charm and character of a Victorian property.

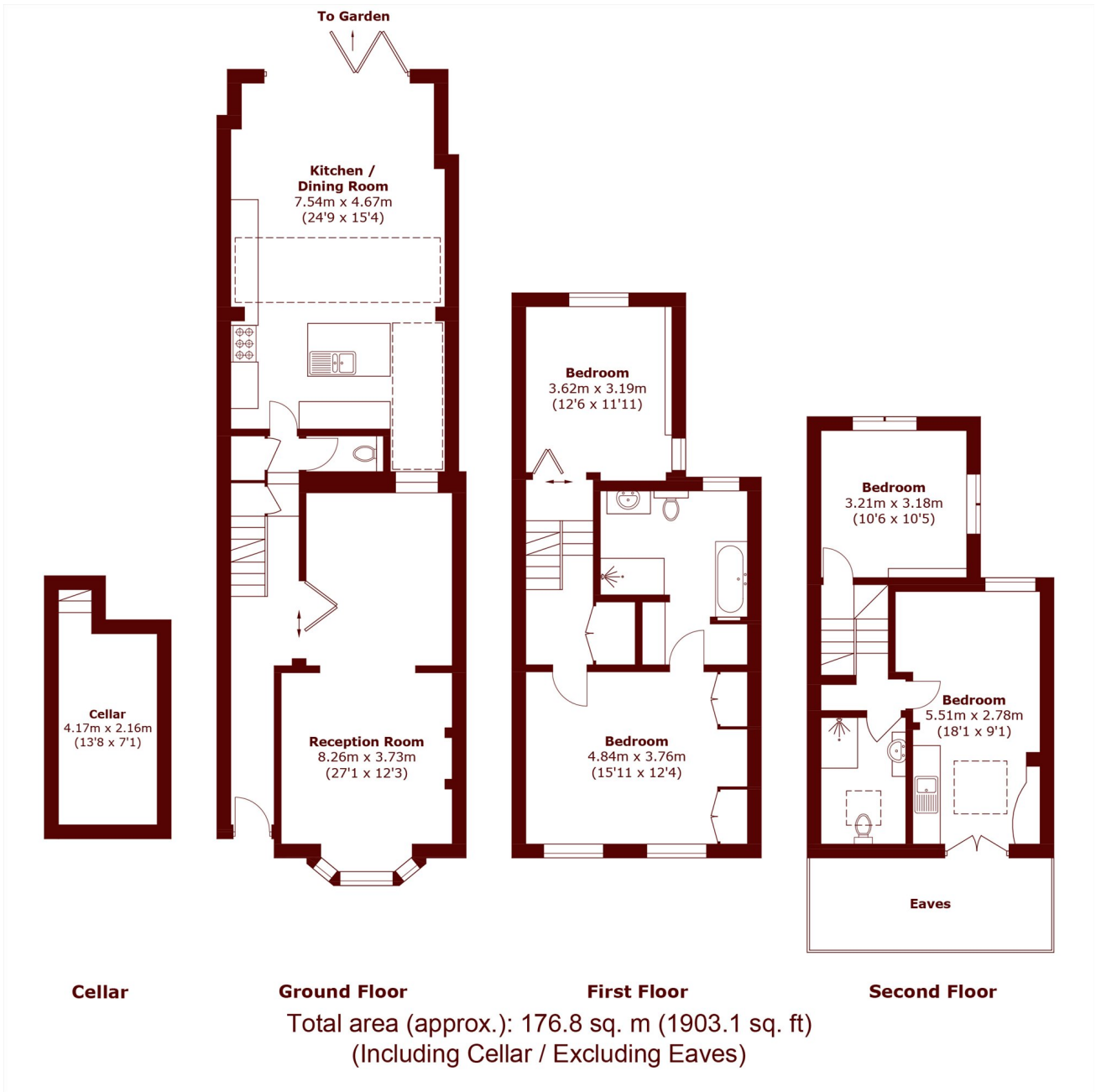








# STEP INSIDE TURRET GROVE



Clapham  
020 7501 3666

Energy Rating: D We aim to make our particulars both accurate and reliable. However, they are not guaranteed; nor do they form part of an offer or contract. If you require clarification on any points then please contact us, especially if you're traveling some distance to view. Please note that appliances and heating systems have not been tested and therefore no warranties can be given as to their good working order

MARSH &  
PARSONS