



MONTAGU MANSIONS, W1U

£2,150,000

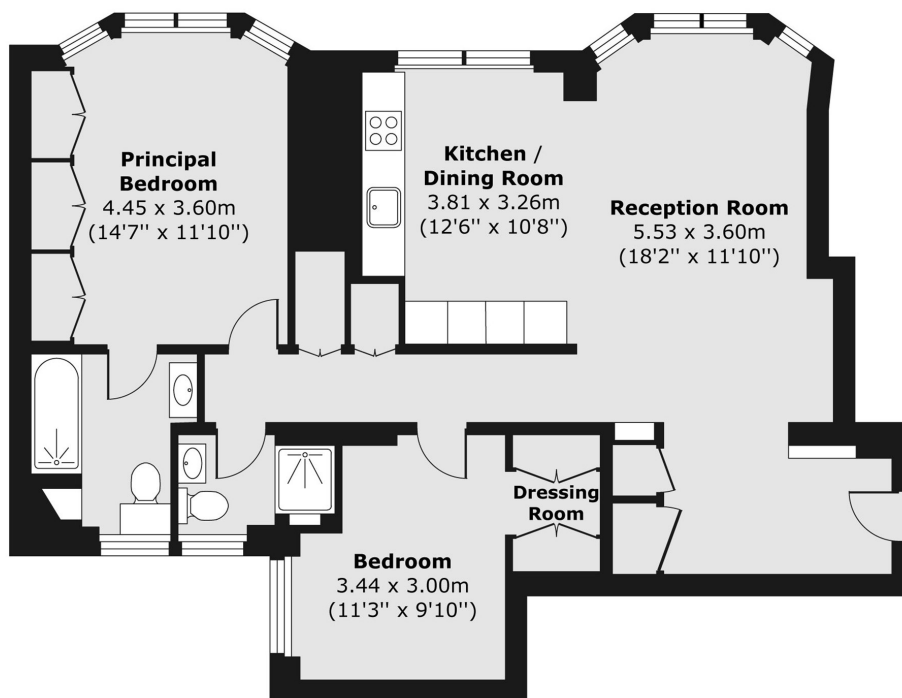
A beautifully presented two-bedroom, two-bathroom apartment set within the highly sought-after Montagu Mansions, one of Marylebone's most distinguished residential addresses.

Two double bedrooms
Third floor (with lift)
Porter

Two bathrooms
South facing
Modern throughout

STEP INSIDE MONTAGU MANSIONS

Third Floor



Total area (approx.) 84.16 sq. m (906 sq. ft)

Marylebone & Mayfair
020 7935 1775

Energy Rating: We aim to make our particulars both accurate and reliable. However, they are not guaranteed; nor do they form part of an offer or contract. If you require clarification on any points then please contact us, especially if you're traveling some distance to view. Please note that appliances and heating systems have not been tested and therefore no warranties can be given as to their good working order

MARSH &
PARSONS