



GLAISHER STREET, SE8

£450,000

Spacious apartment
Two large bedrooms
Family bathroom and en suite
River views and private balcony
Off-street parking
Energy rating: c



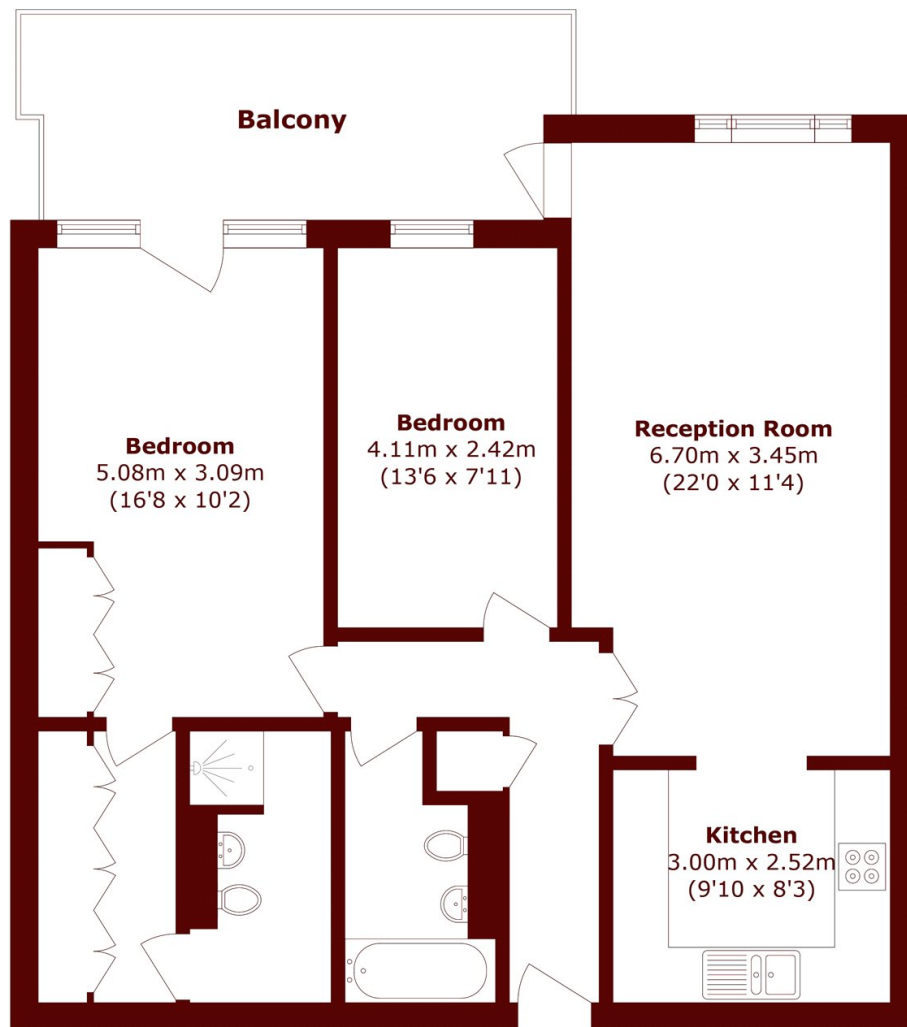
ABOUT THE PROPERTY

This beautifully presented riverfront apartment comes with the added benefit of off-street parking and an on-site porter's lodge. Inside, you'll find a spacious living room with open plan kitchen and direct access to a private balcony terrace. The apartment also features a stylish family bathroom and two bedrooms, the master boasting tall fitted wardrobes, a walk-in wardrobe and a private en suite. Further advantages include double-glazed windows and dedicated bicycle storage within the building.

Located just a short walk from both Greenwich mainline and DLR stations, this property offers superb transport links. Additionally, the vibrant heart of Greenwich town centre is just moments away.



STEP INSIDE GLAISHER STREET



Total area (approx.): 79.2 sq. m (852.5 sq. ft)

Greenwich
020 8312 8312

Energy Rating: C We aim to make our particulars both accurate and reliable. However, they are not guaranteed; nor do they form part of an offer or contract. If you require clarification on any points then please contact us, especially if you're traveling some distance to view. Please note that appliances and heating systems have not been tested and therefore no warranties can be given as to their good working order

MARSH &
PARSONS