



## NETHERFORD ROAD, SW4

£1,350,000

Victorian Family House  
Newly Refurbished  
Principle En Suite  
C.2,000 sq ft  
Quiet Residential Street  
Close to Clapham Common

@marshandparsons  
marshandparsons.co.uk

MARSH &  
PARSONS

# ABOUT THE PROPERTY

A beautifully finished four bedroom family house with an extended eat-in kitchen, luxurious principal bedroom suite and private garden, situated on a popular residential road in Clapham Old Town. Chain free.

This superb house extends to just under 2,000 sq ft and has been tastefully extended into the side return and loft, creating a spacious and well balanced family home. The property offers a bright kitchen/dining space opening onto the garden, generous reception accommodation, and well proportioned bedrooms arranged over multiple floors, combining period charm with contemporary finishes throughout.

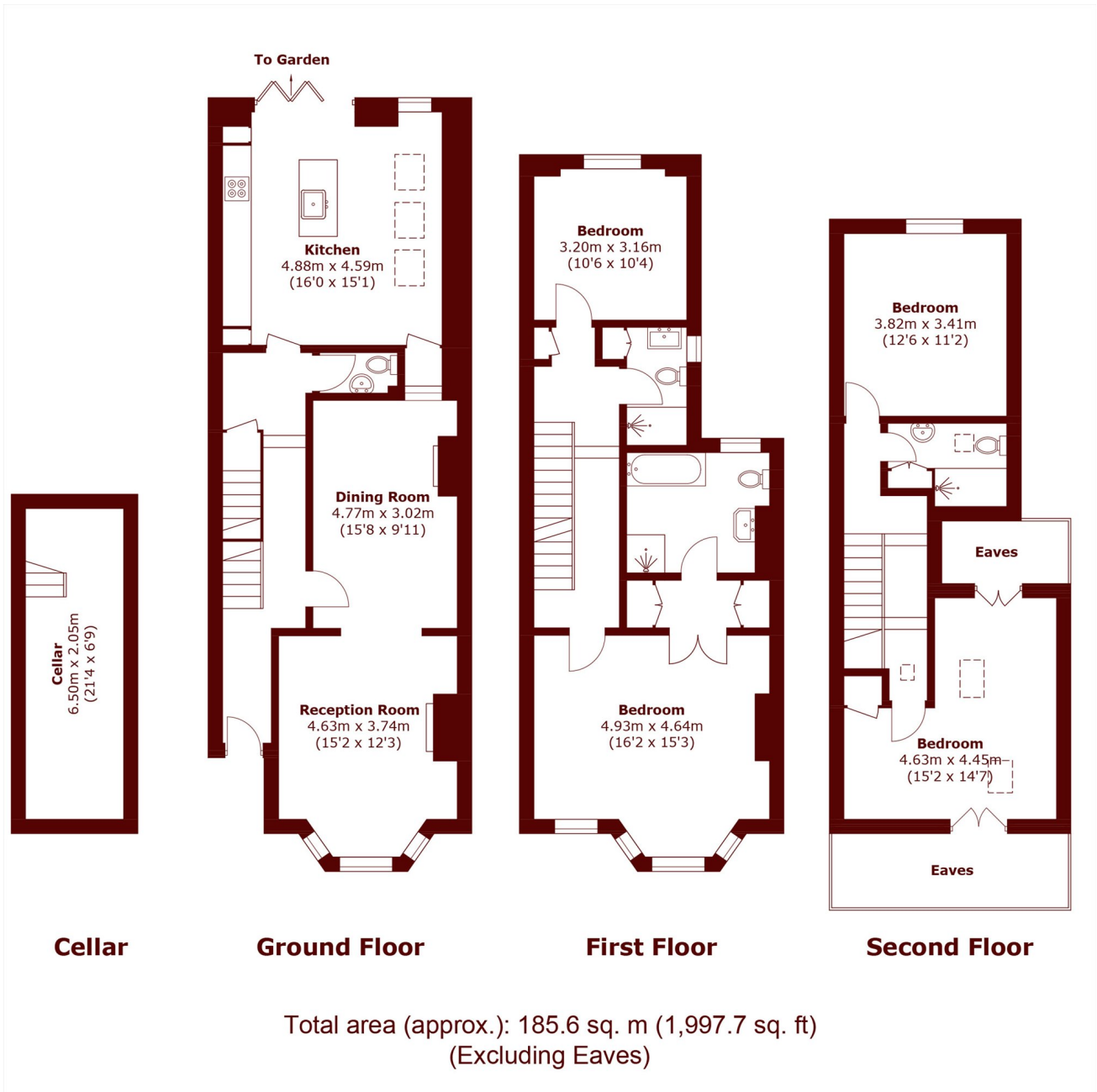








# STEP INSIDE NETHERFORD ROAD



Clapham  
020 7501 3666

Energy Rating: C We aim to make our particulars both accurate and reliable. However, they are not guaranteed; nor do they form part of an offer or contract. If you require clarification on any points then please contact us, especially if you're traveling some distance to view. Please note that appliances and heating systems have not been tested and therefore no warranties can be given as to their good working order

MARSH &  
PARSONS