



INVERNESS TERRACE, W2

£900,000

First floor apartment
Private roof terrace
Lift access
High ceilings
Enviably location
EPC- C

@marshandparsons
marshandparsons.co.uk

MARSH &
PARSONS

ABOUT THE PROPERTY

This stunning apartment is presented in immaculate condition throughout and comprises a huge reception room leading out to a large private balcony.

Ideally positioned at the southern end of the road, Inverness Terrace is superbly located just moments from the vast green open spaces of Hyde Park whilst there are is fantastic array of fashionable boutiques, cafes and restaurants close by on Westbourne Grove. Excellent transport links are provided with the central line which is easily accessed from the underground at Bayswater which is just around the corner.





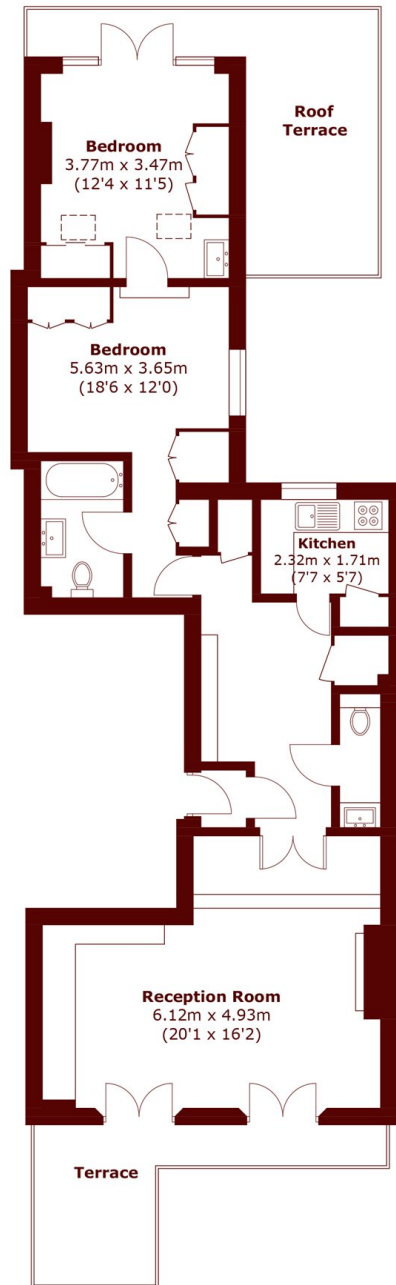


FURTHER DETAILS

There is a well-equipped separate kitchen with integrated appliances, a large double bedroom with ample built-in storage and a luxurious bathroom. The property further benefits an additional room perfect for a home office, a roof terrace to the rear, super high ceilings and lift-access.



STEP INSIDE INVERNESS TERRACE



Total area (approx.): 79.2 sq. m (852.5 sq. ft)
Terrace Area: 24.4 sq. m (262.6 sq. ft)

Notting Hill
020 7313 2890

Energy Rating: C We aim to make our particulars both accurate and reliable. However, they are not guaranteed; nor do they form part of an offer or contract. If you require clarification on any points then please contact us, especially if you're traveling some distance to view. Please note that appliances and heating systems have not been tested and therefore no warranties can be given as to their good working order

**MARSH &
PARSONS**