



NORMAN ROAD, SE10

£470,000

Seventh floor penthouse
Two double bedrooms
Two bathrooms
Private roof terrace
Communal gardens
Energy rating: c

@marshandparsons
marshandparsons.co.uk

MARSH &
PARSONS



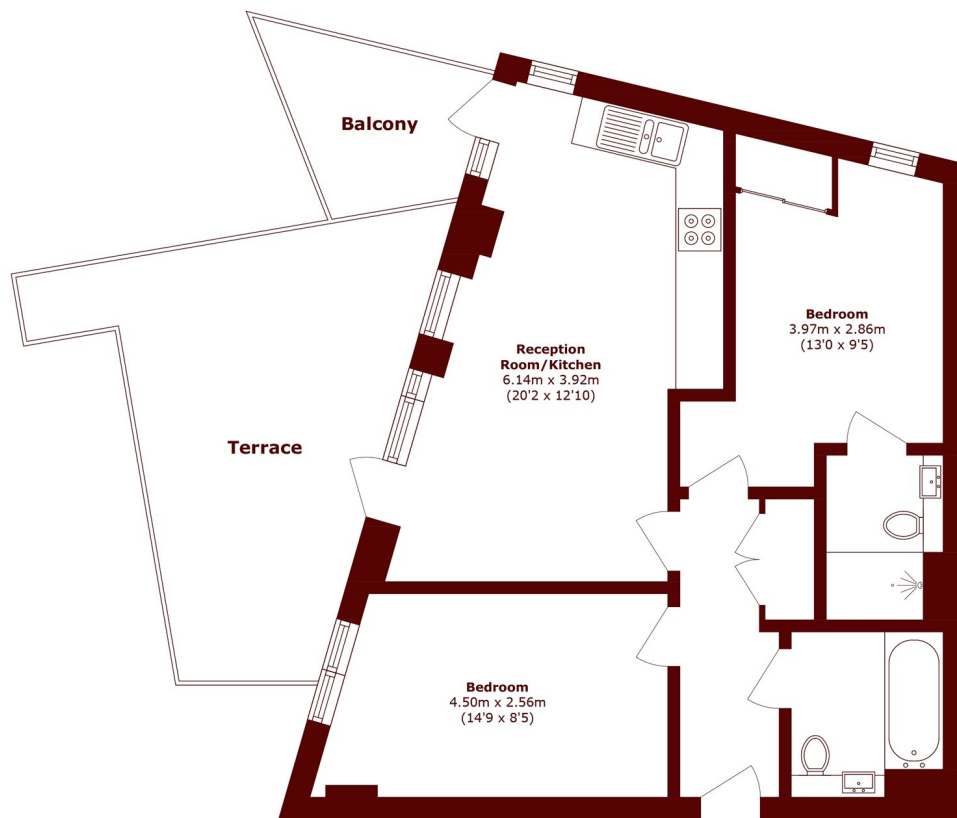
ABOUT THE PROPERTY

Seventh floor penthouse apartment, featuring a private south east facing large roof terrace and fitted air con units in the kitchen/lounge and main bedroom. Includes access to two communal roof spaces with views of Greenwich park and the Royal Observatory, and a communal ground level garden. Accommodation comprises a spacious living room and open plan kitchen. Two double bedrooms, en suite shower room and a family bathroom. Chain free sale.

Greenwich rail and DLR stations are moments away on foot. Greenwich town centre is a short walk away, where you can enjoy the park, covered market, Royal Naval college, riverside pubs and Greenwich pier.



STEP INSIDE NORMAN ROAD



Total area (approx.): 56.5 sq. m (608.1 sq. ft)
Balcony area (approx.): 4.6 sq. m (49.5 sq. ft)
Terrace area (approx.): 18.2 sq. m (195.9 sq. ft)

Greenwich
020 8312 8312

Energy Rating: C We aim to make our particulars both accurate and reliable. However, they are not guaranteed; nor do they form part of an offer or contract. If you require clarification on any points then please contact us, especially if you're traveling some distance to view. Please note that appliances and heating systems have not been tested and therefore no warranties can be given as to their good working order

**MARSH &
PARSONS**