



## QUEENSMILL ROAD, SW6

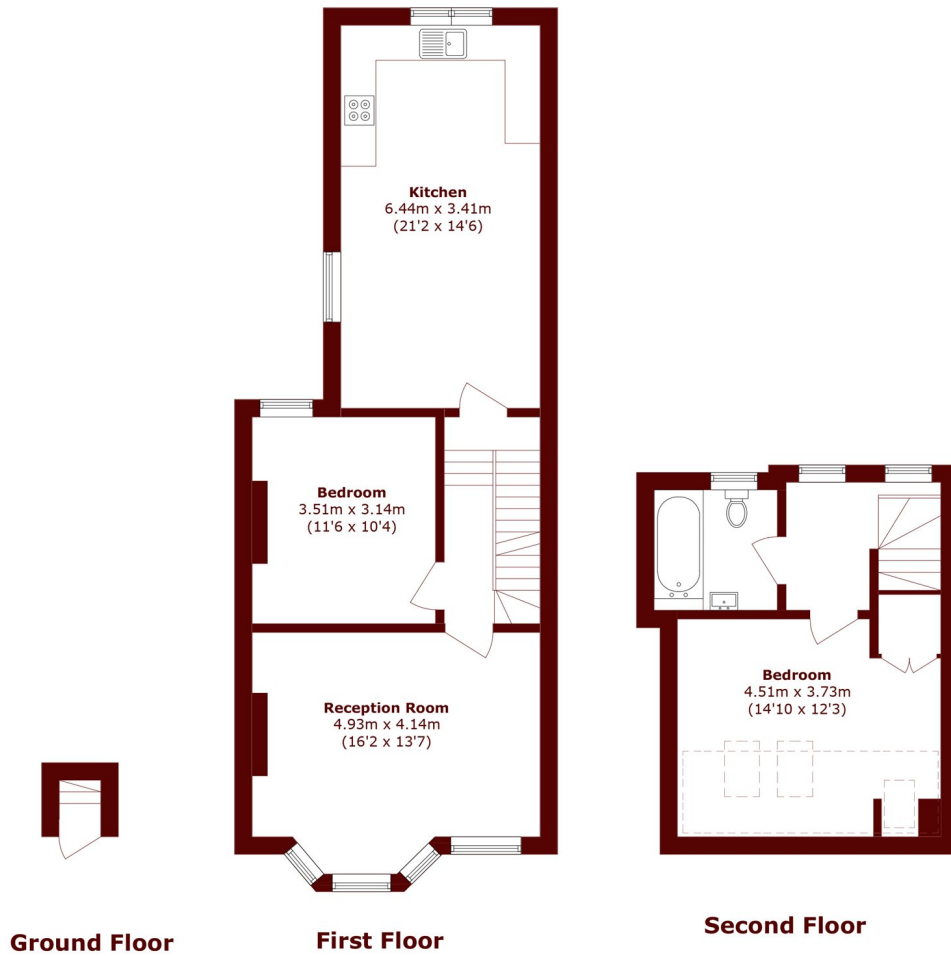
£3,000 per week

A well-presented first floor flat ideally located on the popular Queensmill Road in the heart of Fulham. The property offers bright and well-balanced accommodation, comprising a spacious reception room with ample space

Two double bedrooms  
Large eat in kitchen

Duplex  
Separate living room

# STEP INSIDE QUEENSMILL ROAD



Total area (approx.): 81.2 sq. m (874.0 sq. ft)

National Guidelines (may differ depending on Local Authority).

- E) 4.6 square meters > = no one
- D) 4.6 - 6.5 square meters = 1/2 person (Child up to 10 years)
- C) 6.5 - 8.4 square meters = 1 person
- B) 8.4 - 10.2 square meters = 1 1/2 people
- A) 10.2 meters < = 2 people

**Bishops Park**  
020 7368 2480

Energy Rating: We aim to make our particulars both accurate and reliable. However, they are not guaranteed; nor do they form part of an offer or contract. If you require clarification on any points then please contact us, especially if you're traveling some distance to view. Please note that appliances and heating systems have not been tested and therefore no warranties can be given as to their good working order

**MARSH &  
PARSONS**