



MARLBOROUGH ROAD, W4

£700,000

Two bedrooms
Two bathrooms
Private balcony
Allocated parking
Lift access
Energy rating: c

@marshandparsons
marshandparsons.co.uk

MARSH &
PARSONS



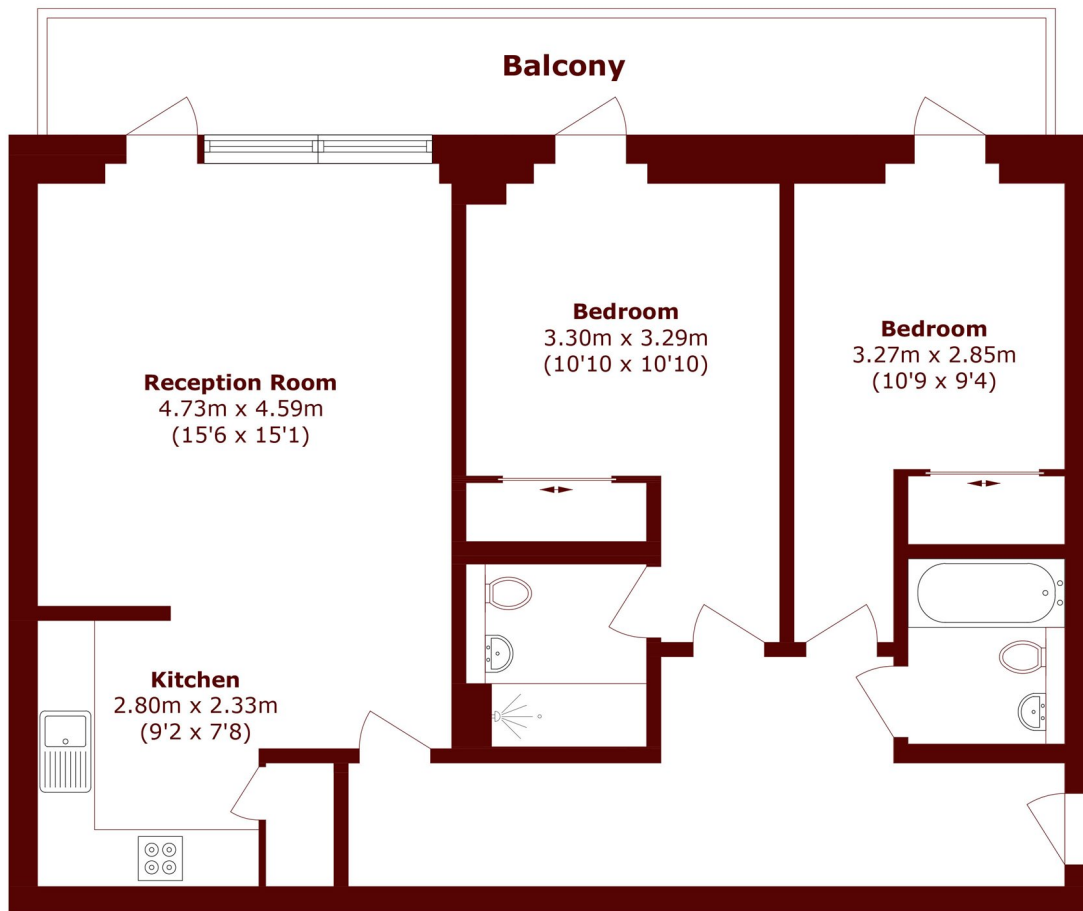
ABOUT THE PROPERTY

Built in 2011 and situated on the second floor of this sought-after residential development. This two-bedroom, two-bathroom apartment comes with lift access, a long lease, a private balcony and under ground allocated parking.

Marlborough Road is moments from Chiswick Park and located just off Chiswick High Road, which has many Boutique Shops, Restaurants, Bars, cafes and convenience stores. Transport links include Gunnersbury tube station (District Line).



STEP INSIDE MARLBOROUGH ROAD



Total area (approx.): 81.2 sq. m (874.0 sq. ft)

Balcony area (approx.): 12.9 sq. m (138.8 sq. ft)

Chiswick
020 8994 2556

Energy Rating: C We aim to make our particulars both accurate and reliable. However, they are not guaranteed; nor do they form part of an offer or contract. If you require clarification on any points then please contact us, especially if you're traveling some distance to view. Please note that appliances and heating systems have not been tested and therefore no warranties can be given as to their good working order

**MARSH &
PARSONS**