



RAILTON ROAD, SE24

£475,000

Two Double Bedrooms
Split Level
Close To Transport
Superb Condition
Bright And Airy
Energy Rating: C

@marshandparsons
marshandparsons.co.uk

MARSH &
PARSONS



ABOUT THE PROPERTY

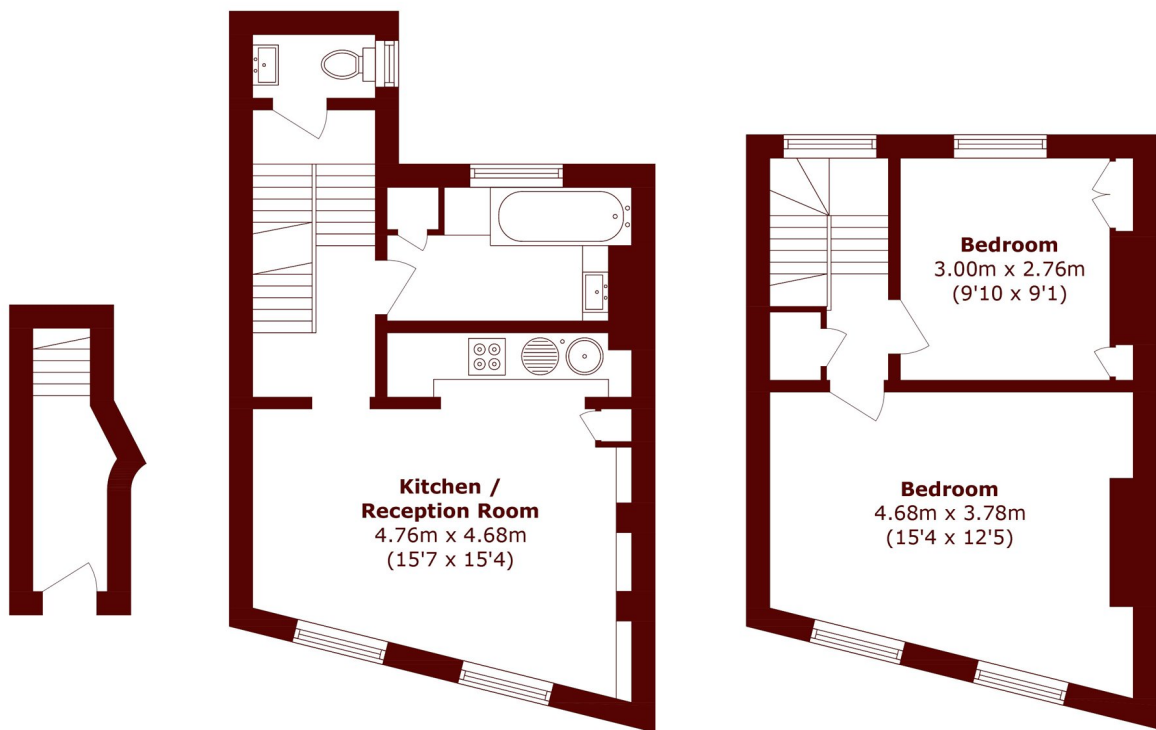
A charming two double bedroom split-level maisonette set over the first and second floors of a period property.

Entering through your own front door and offering approximately 700 sqft of well-planned living space the flat boasts a bright and spacious open-plan kitchen/reception/dining room on the first floor alongside a family bathroom and W/C. Upstairs, the second floor comprises two generous double bedrooms.

Nestled between Brixton and Herne Hill, Railton Road benefits from a community-focused atmosphere. The area is well-known for its independent cafes, local shops, and proximity to the green open spaces of Brockwell Park.



STEP INSIDE RAILTON ROAD



Ground Floor

First Floor

Second Floor

Total area (approx.): 65.3 sq. m (702.8 sq. ft)

Brixton
020 7733 4595

Energy Rating: C We aim to make our particulars both accurate and reliable. However, they are not guaranteed; nor do they form part of an offer or contract. If you require clarification on any points then please contact us, especially if you're traveling some distance to view. Please note that appliances and heating systems have not been tested and therefore no warranties can be given as to their good working order

**MARSH &
PARSONS**