



## KING WILLIAM WALK, SE10

£2,200 per month

Georgian conversion  
Large one bedroom  
Modern kitchen  
Views  
Great location  
Energy rating: d

@marshandparsons  
marshandparsons.co.uk

MARSH &  
PARSONS



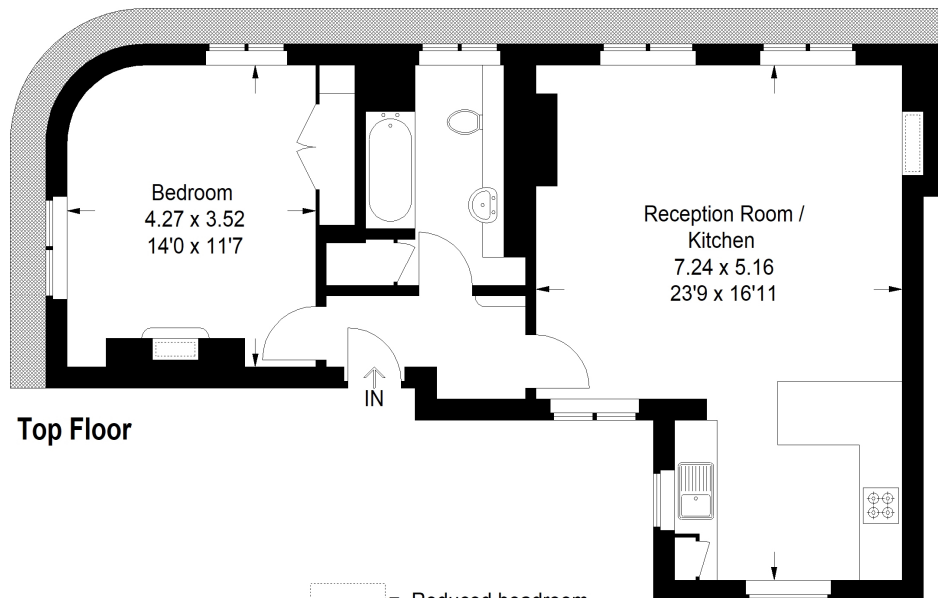
# ABOUT THE PROPERTY

A beautiful one bedroom Georgian conversion in the centre of Greenwich. This property overlooks the Queens House gardens and offers luxurious fixtures and fittings. The interior comprises a spacious reception room with high ceilings, an open plan modern kitchen benefitting from integrated appliances, a modern high quality bathroom suite with fitted shower over bath and a spacious double bedroom with fitted wardrobes. Added benefits include sash windows with secondary glazing and wood flooring throughout.


Ideally located in the heart of Greenwich centre, only a few minutes walk to Cutty Sark DLR station. Easy access to many shops, supermarkets, cafés, pubs and restaurants.



# STEP INSIDE KING WILLIAM WALK



Top Floor

 = Reduced headroom  
below 1.5 m / 5'0

Approximate Gross Internal Area  
61.0 sq m / 657 sq ft

Greenwich  
020 8815 2230

Energy Rating: D We aim to make our particulars both accurate and reliable. However, they are not guaranteed; nor do they form part of an offer or contract. If you require clarification on any points then please contact us, especially if you're traveling some distance to view. Please note that appliances and heating systems have not been tested and therefore no warranties can be given as to their good working order

MARSH &  
PARSONS