



## Tabley Road, N7

£550,000



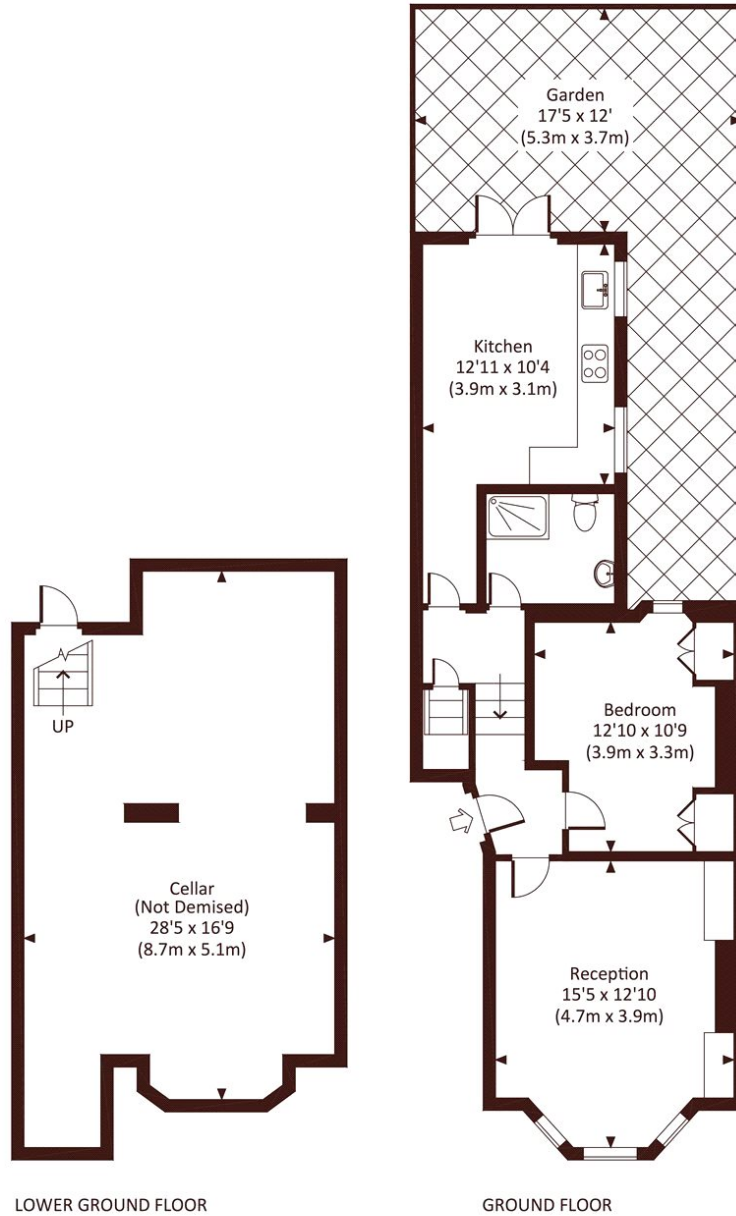
- Private Rear Garden
- Ground Floor
- On Street Parking
- Period Conversion
- Spacious Living Room
- Low Service Charges

## TABLEY ROAD, N7

Approx. gross internal area

592 Sq.Ft. / 55.0 Sq.M.

1042 Sq.Ft. / 96.8 Sq.M. Inc. Cellar



All measurements have been made in accordance with RICS Code of Measuring Practice which are approximate only and only for illustrative purposes. For the avoidance of doubt, Dowling Jones Design shall not be liable for any reliance on these measurements. © 2016 www.dowlingjones.com 020 7610 9933

### Marsh & Parsons Camden

27 Parkway, London, NW1

7PN

020 7244 2200

We aim to make our particulars both accurate and reliable. However, they are not guaranteed; nor do they form part of an offer or contract. If you require clarification on any points then please contact us, especially if you're traveling some distance to view. Please note that appliances and heating systems have not been tested and therefore no warranties can be given as to their good working order.