



## SUNNYSIDE, SW19

£19,500 per month

Five/six bedrooms  
Five bathrooms  
Circa 4750 square feet  
Swimming pool  
Off-street parking  
Energy rating: c

@marshandparsons  
marshandparsons.co.uk

MARSH &  
PARSONS

# ABOUT THE PROPERTY

A unique architect-designed contemporary house of 4750 sq feet (gross internal area) with 5/6 bedrooms, 5 bathrooms, a large entrance hall, an indoor pool complex with steam room, a large cinema/entertainment room with bar, an open plan family room/kitchen, a study and a drawing room. Previously featured in the Sunday Thames for its unique nature.

Located in a secluded plot in the heart of Wimbledon Village moments away from an array of restaurants, boutique and specialist shops along with traditional English pubs. It also has easy access to the vast Wimbledon Common.

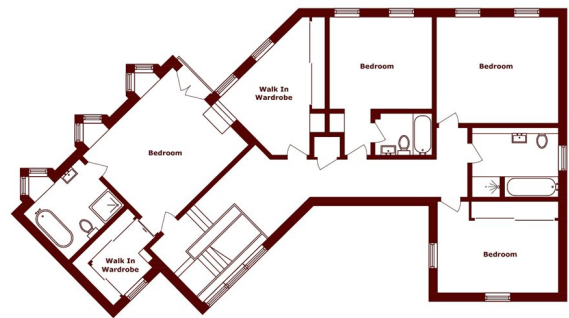




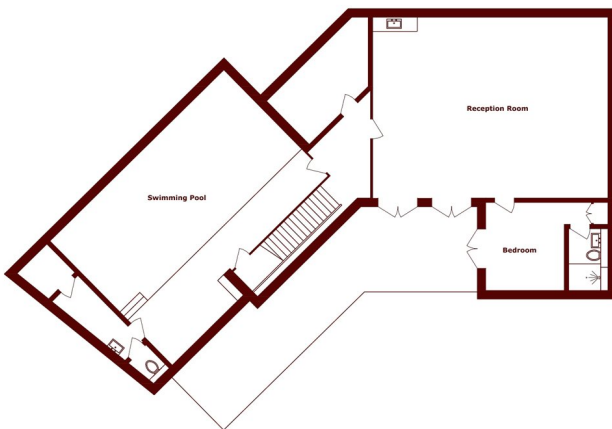




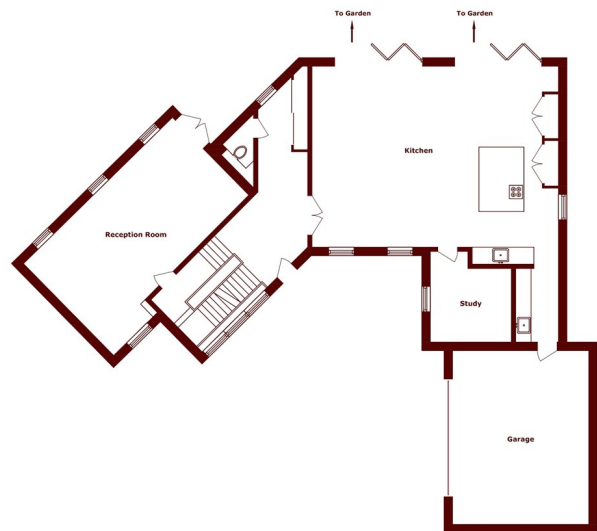
# STEP INSIDE SUNNYSIDE



First Floor



Lower Ground Floor



Ground Floor

Wimbledon  
020 8879 6661

Energy Rating: C We aim to make our particulars both accurate and reliable. However, they are not guaranteed; nor do they form part of an offer or contract. If you require clarification on any points then please contact us, especially if you're traveling some distance to view. Please note that appliances and heating systems have not been tested and therefore no warranties can be given as to their good working order

MARSH &  
PARSONS