



KINGSTON ROAD, SW19

£2,200 per month

Underfloor heating
Surround sound
Electric windows and blinds
Spacious eaves storage
Bath and walk-in shower
Energy rating: d

@marshandparsons
marshandparsons.co.uk

MARSH &
PARSONS



ABOUT THE PROPERTY

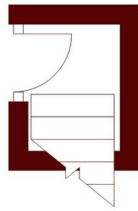
A modern one bedroom apartment offering an open plan reception room/kitchen, double bedroom with built-in wardrobes, bathroom with separate shower and bath.

Situated moments from South Wimbledon underground station and just over half a mile from Wimbledon station.

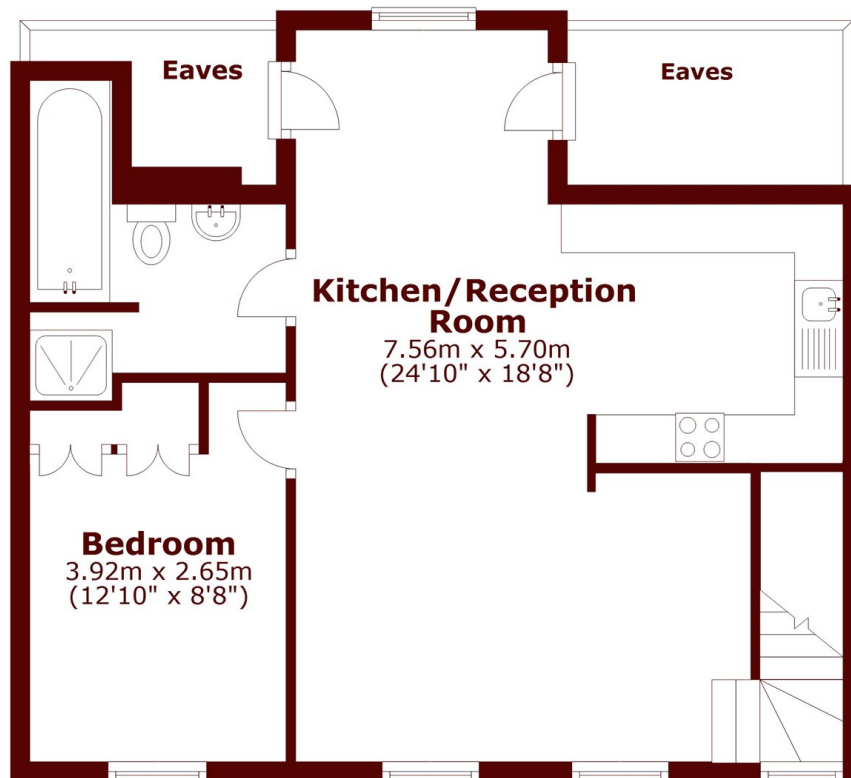


STEP INSIDE KINGSTON ROAD

Third Floor



Fourth Floor



Total area: approx. 55.4 sq. metres (596.8 sq. feet)

Wimbledon
020 8879 6661

Energy Rating: D We aim to make our particulars both accurate and reliable. However, they are not guaranteed; nor do they form part of an offer or contract. If you require clarification on any points then please contact us, especially if you're traveling some distance to view. Please note that appliances and heating systems have not been tested and therefore no warranties can be given as to their good working order

MARSH &
PARSONS