



Old Brompton Road, SW5

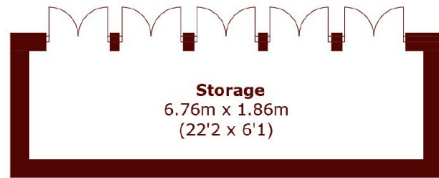
£2,400,000



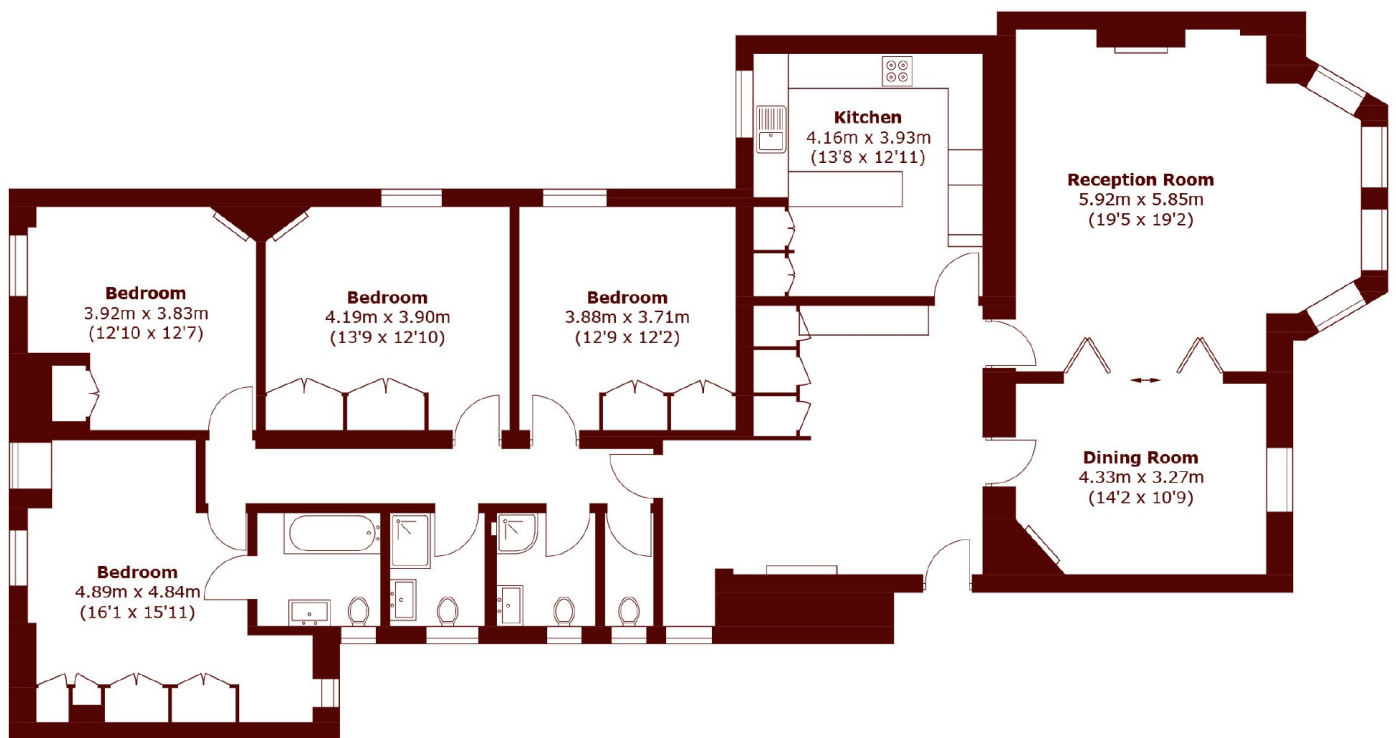
- Four Double Bedrooms
- Three Bathrooms

- Double Reception Room
- Victorian Features

- Modernised Throughout
- Low Outgoings



(Not Shown In Actual Location / Orientation)



Raised Ground Floor

Total area (approx.): 181.3 sq. m (1,951.5 sq. ft)
Storage: 13.4 sq. m (144.2 sq. ft)

Marsh & Parsons Earls Court

246 Old Brompton Road,
Earls Court, London, SW5
020 7590 0800