



FORTHBRIDGE ROAD, SW11

£750,000

Two double bedrooms

Victorian

Fully refurbished

Private garden

Share of freehold

Close to Common

@marshandparsons
marshandparsons.co.uk

MARSH &
PARSONS



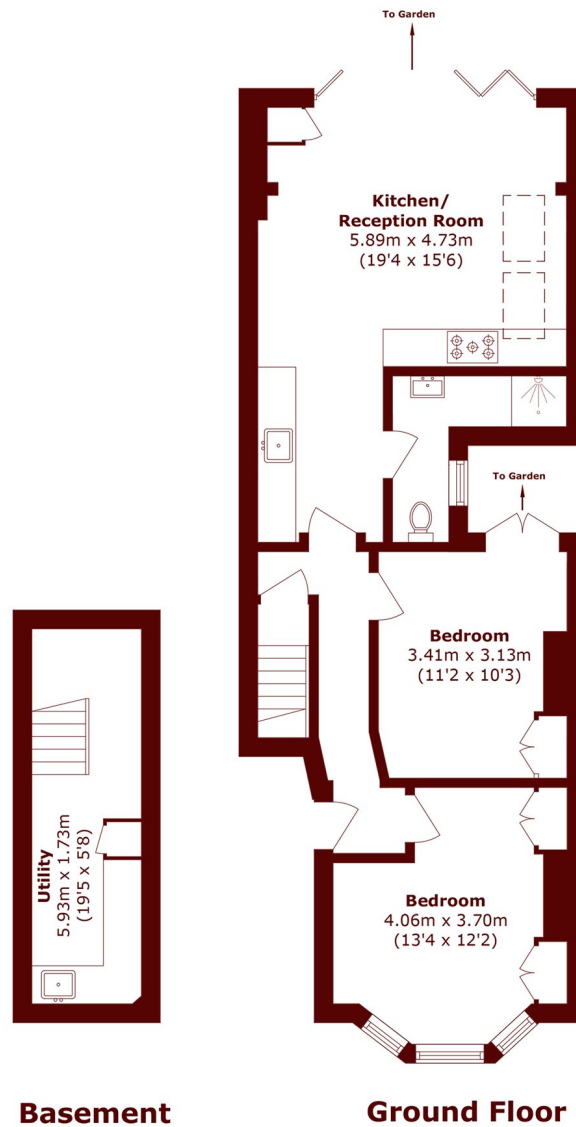
ABOUT THE PROPERTY

This bright two double bedroom two bathroom Victorian garden flat has been beautifully redesigned, including a full rear extension with bi-folding doors on to a sunny private patio garden.

Forthbridge Road is quietly tucked away off Clapham Common North Side. There is easy access to Lavender Hill and Northcote Road, with a wide selection of bars, restaurant's and shops. Clapham Junction is a short walk away, with frequent services in and out of London.



STEP INSIDE FORTHBRIDGE ROAD



Total area (approx.): 72.2 sq. m (777.1 sq. ft)

Battersea
020 7326 9920

Energy Rating: C We aim to make our particulars both accurate and reliable. However, they are not guaranteed; nor do they form part of an offer or contract. If you require clarification on any points then please contact us, especially if you're traveling some distance to view. Please note that appliances and heating systems have not been tested and therefore no warranties can be given as to their good working order

**MARSH &
PARSONS**