



## HELIX ROAD, SW2

£400,000

One Double Bedroom  
Split Level  
Period Property  
Chain Free  
Open-Plan Kitchen/Reception  
Energy Rating: D

@marshandparsons  
marshandparsons.co.uk

MARSH &  
PARSONS



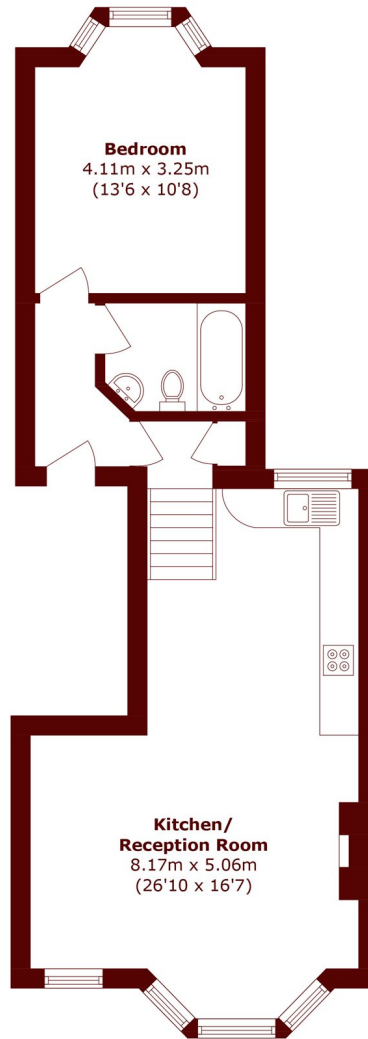
# ABOUT THE PROPERTY

A spacious and bright one double bedroom split-level flat set over the first floor of an impressive period conversion. Boasting 577 sq ft of living space comprising a generous open-plan kitchen reception room, a well-proportioned double bedroom and a three piece family bathroom.

Helix Road is a popular residential street nestled between Brixton and Herne Hill, close to the open green spaces of Brockwell Park and the vast array of shops, cafes and restaurants of Brixton Hill alongside the excellent transport links into central London via Brixton Underground, National Rail & multiple bus routes.



# STEP INSIDE HELIX ROAD



Total area (approx.): 53.6 sq. m (577.0 sq. ft)

**Brixton**  
020 7733 4595

Energy Rating: D We aim to make our particulars both accurate and reliable. However, they are not guaranteed; nor do they form part of an offer or contract. If you require clarification on any points then please contact us, especially if you're traveling some distance to view. Please note that appliances and heating systems have not been tested and therefore no warranties can be given as to their good working order

**MARSH &  
PARSONS**