



## GASKARTH ROAD, SW12

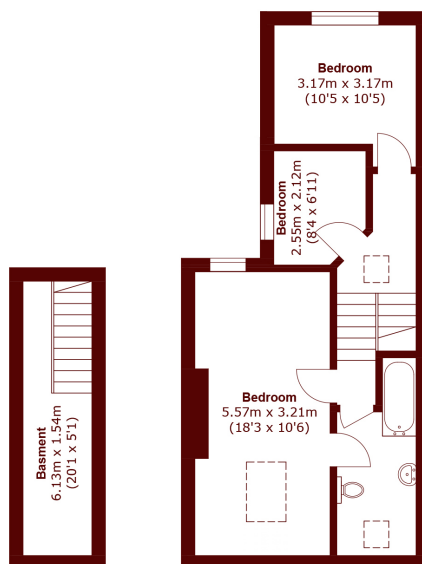
£7,000 per month

This fantastic seven-bedroom HMO house is perfect for sharers. It's neutrally decorated and well-presented throughout, comprising of seven double bedrooms, three well finished bathrooms and a private south

Seven bedrooms  
Spacious  
Bright

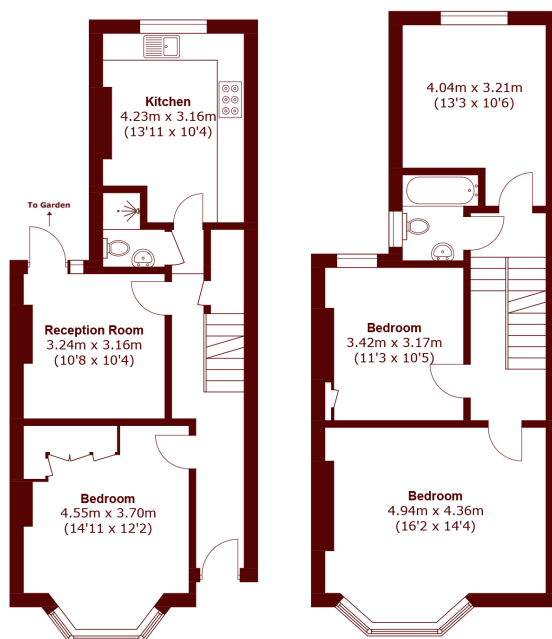
Three bathrooms  
Private garden  
Energy rating: d.

# STEP INSIDE GASKARTH ROAD



**Basement**

**Second Floor**



**Ground Floor**

**First Floor**

Total area (approx.): 166.3 sq. m (1790.0 sq. ft)  
(Including Basement)

**Balham & Clapham South**  
020 8772 9200

Energy Rating: We aim to make our particulars both accurate and reliable. However, they are not guaranteed; nor do they form part of an offer or contract. If you require clarification on any points then please contact us, especially if you're traveling some distance to view. Please note that appliances and heating systems have not been tested and therefore no warranties can be given as to their good working order

**MARSH &  
PARSONS**