



MARLBOROUGH MEWS, SW2

£889,999

Three Double Bedrooms
Three Bathrooms
Double-Gated Mews
Allocated Off Street Parking
Chain Free
Energy Rating: C

@marshandparsons
marshandparsons.co.uk

MARSH &
PARSONS

ABOUT THE PROPERTY

An impressive end of terrace freehold mews house arranged over three floors comprising three double bedrooms, three bathrooms, a well-equipped kitchen and a generous reception room leading directly to an incredibly private mature garden. Benefitting further from an allocated parking space right outside your front door.

Located in a secure, quiet and community focused mews tucked off Acre Lane perfectly nested between Brixton & Clapham with a vast array of independent shops, cafés and restaurants on your doorstep. The excellent transport links of Brixton (Victoria Line) & Clapham North (Northern Line) underground are only a short walk away alongside multiple bus routes.

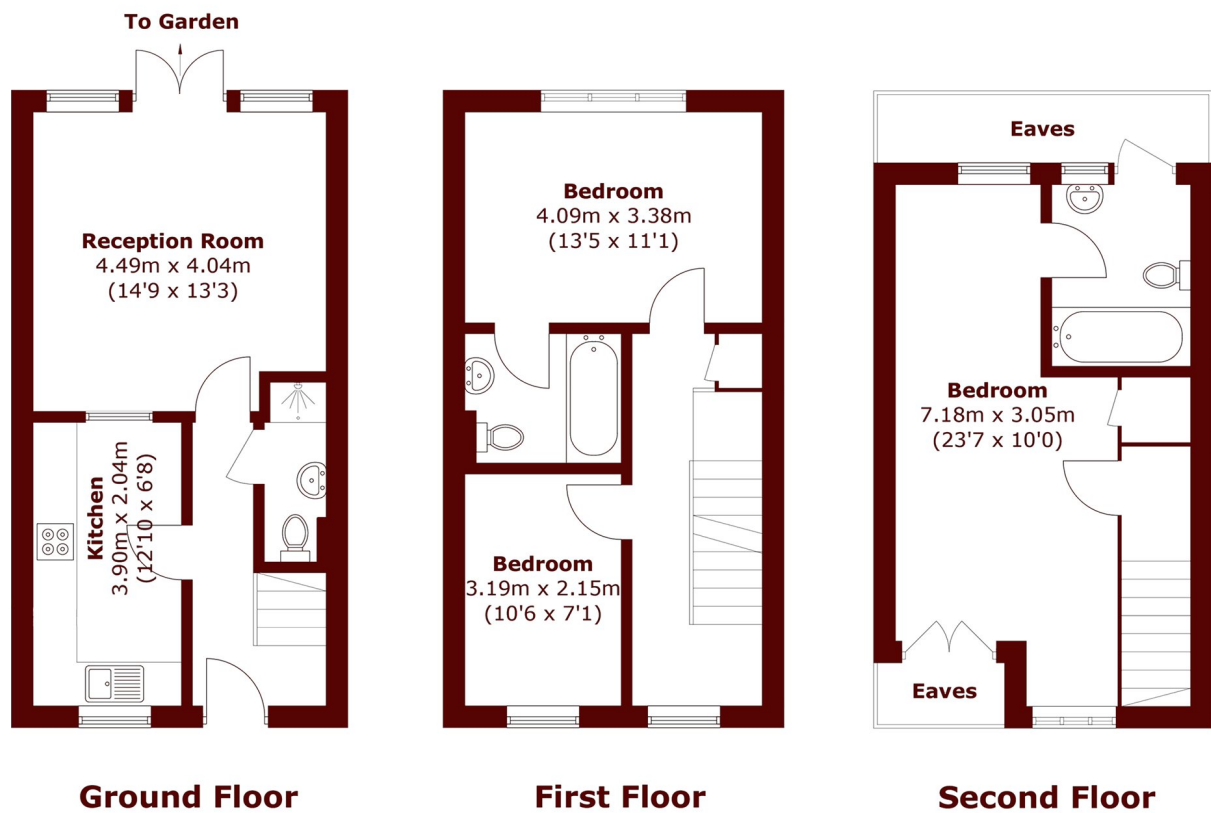








STEP INSIDE MARLBOROUGH MEWS



Total area (approx.): 94.4 sq. m (1,016.1 sq. ft)
(Excluding Eaves)

Brixton
020 7733 4595

Energy Rating: C We aim to make our particulars both accurate and reliable. However, they are not guaranteed; nor do they form part of an offer or contract. If you require clarification on any points then please contact us, especially if you're traveling some distance to view. Please note that appliances and heating systems have not been tested and therefore no warranties can be given as to their good working order

MARSH &
PARSONS