



MERRYWEATHER PLACE, SE10

£325,000

Modern top floor apartment

One bedroom

Large south facing balcony

Private parking

Close to Greenwich Park

Energy rating: c

@marshandparsons
marshandparsons.co.uk

MARSH &
PARSONS



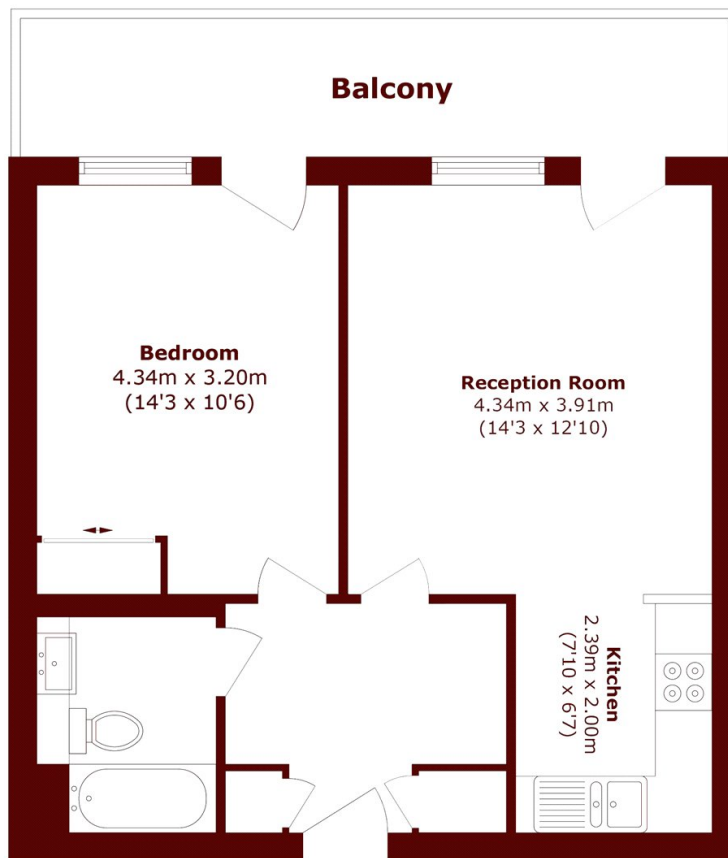
ABOUT THE PROPERTY

This modern top floor apartment boasts a spacious living room with a dedicated dining area, an open plan kitchen, and a large south facing balcony. The generously sized bedroom features built in wardrobes, while the bathroom offers a shower over the bath. Additional benefits include a private parking space, plenty of storage space, gas central heating, a combi boiler, and large double glazed windows that enhance both comfort and energy efficiency.

Located just a short stroll from Greenwich's royal park, this home offers easy access to cycle routes leading directly into central London, as well as the river taxis from Greenwich pier.



STEP INSIDE MERRYWEATHER PLACE



Total area (approx.): 49.1 sq. m (528.5 sq. ft)

Balcony area (approx.): 11.0 sq. m (118.4 sq. ft)

Greenwich
020 8312 8312

Energy Rating: C We aim to make our particulars both accurate and reliable. However, they are not guaranteed; nor do they form part of an offer or contract. If you require clarification on any points then please contact us, especially if you're traveling some distance to view. Please note that appliances and heating systems have not been tested and therefore no warranties can be given as to their good working order

MARSH &
PARSONS