



DOUGLAS ROAD, NW6

£550,000

Two Bedrooms
Split Level
Long Lease
Quiet Street
Close to Amenities
Excellent Transport Links

@marshandparsons
marshandparsons.co.uk

MARSH &
PARSONS



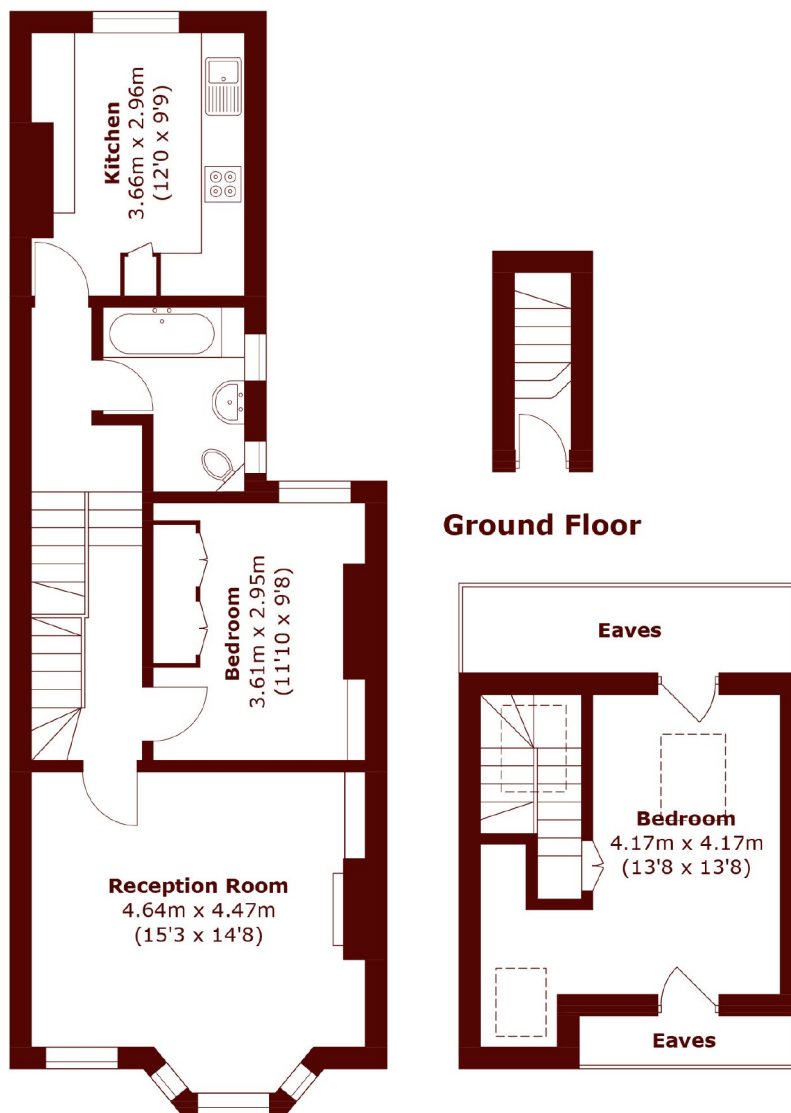
ABOUT THE PROPERTY

This charming property comes to market in walk-in condition. Arranged over two floors, the property features high ceilings, large windows and an abundance of natural light.

Douglas Road is ideally located to the restaurants and shops of Salusbury Road and the green open spaces of Queen's Park. Local transport links include Queen's Park (Bakerloo line) and Brondesbury Park (London Overground).



STEP INSIDE DOUGLAS ROAD



Ground Floor

First Floor

Second Floor

Total area (approx.): 76.0 sq. m (818.0 sq. ft)
(Excluding Eaves)

Queen's Park
020 7624 4513

Energy Rating: C We aim to make our particulars both accurate and reliable. However, they are not guaranteed; nor do they form part of an offer or contract. If you require clarification on any points then please contact us, especially if you're traveling some distance to view. Please note that appliances and heating systems have not been tested and therefore no warranties can be given as to their good working order

**MARSH &
PARSONS**