



## MOSCOW ROAD, W2

£3,500 per month

A beautiful two bedroom lateral apartment within a sought after development in the heart of Bayswater.

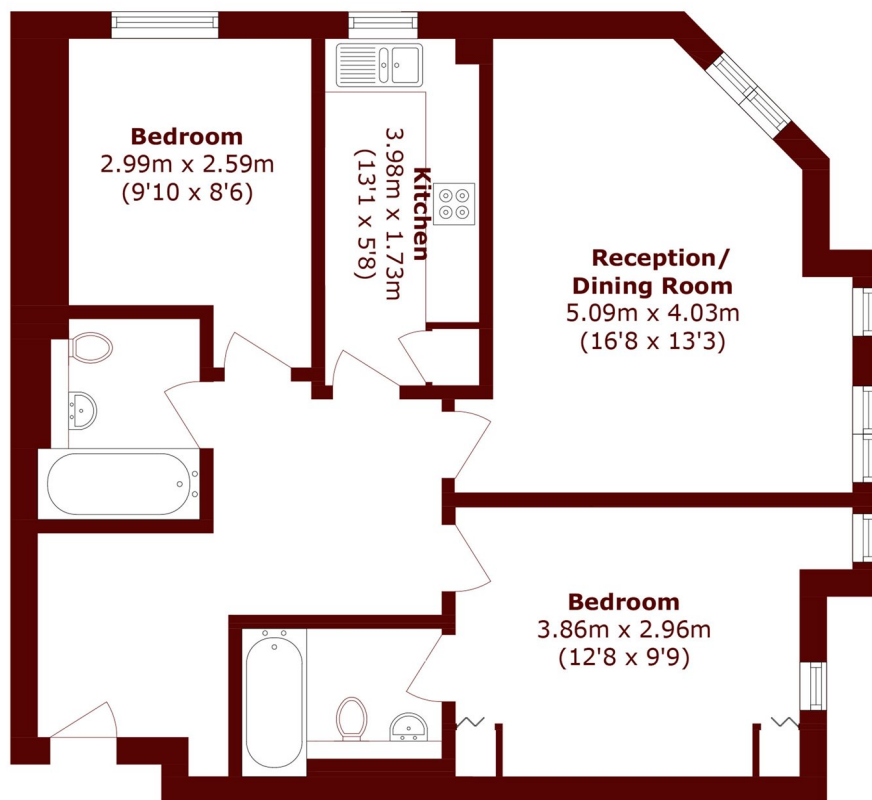
Two bedrooms  
Two bathrooms  
Wooden floors

Porter  
Superb W2 location  
EPC - D

@marshandparsons  
marshandparsons.co.uk

MARSH &  
PARSONS

# STEP INSIDE MOSCOW ROAD



## Ground Floor

Total area (approx.): 70.8 sq. m (762.0 sq. ft)

Notting Hill  
020 7313 6910

Energy Rating: D We aim to make our particulars both accurate and reliable. However, they are not guaranteed; nor do they form part of an offer or contract. If you require clarification on any points then please contact us, especially if you're traveling some distance to view. Please note that appliances and heating systems have not been tested and therefore no warranties can be given as to their good working order

MARSH &  
PARSONS