



BARGE WALK, SE10

£499,000

Modern riverside apartment

Three bedrooms

Two bathrooms

Private balcony

Close to Jubilee tube line

Energy rating: c

@marshandparsons
marshandparsons.co.uk

MARSH &
PARSONS



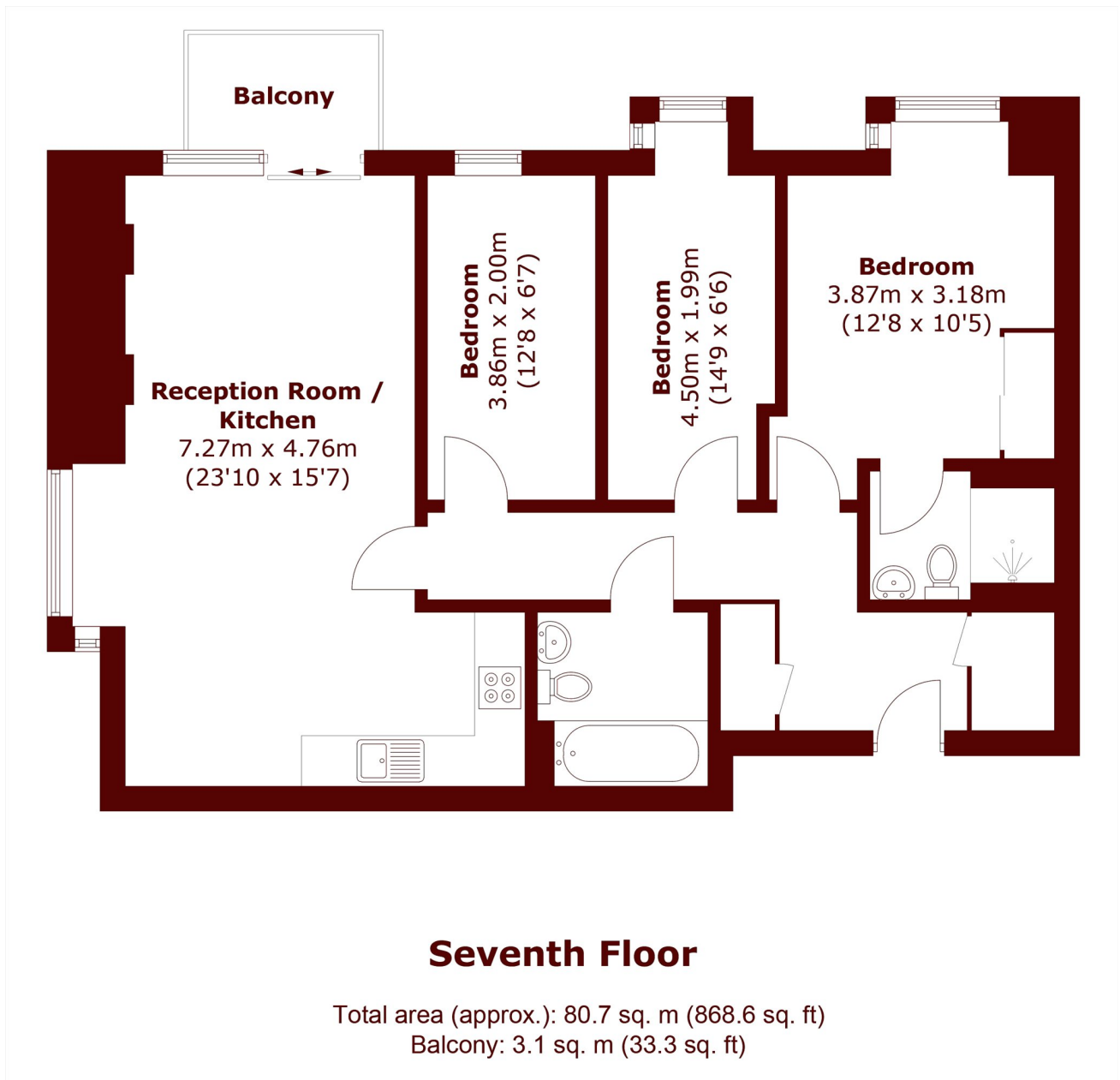
ABOUT THE PROPERTY

Bright and airy modern apartment, offering direct river views and is a short walk away from the O2 centre and North Greenwich tube. The interior comprises three bedrooms, an en suite shower room, family bathroom, an open plan kitchen and double aspect lounge/diner. Further advantages include ample storage, a private balcony with river views. There is a residents concierge on-site and local parks.

There is a choice of supermarkets, gyms, pubs and coffee shops in the immediate area, as well as shopping parks and bus routes into central Greenwich. There is a pier located next to the O2, offering a river taxi service all the way to Westminster.



STEP INSIDE BARGE WALK



Greenwich
020 8312 8312

Energy Rating: C We aim to make our particulars both accurate and reliable. However, they are not guaranteed; nor do they form part of an offer or contract. If you require clarification on any points then please contact us, especially if you're traveling some distance to view. Please note that appliances and heating systems have not been tested and therefore no warranties can be given as to their good working order

MARSH &
PARSONS