



NIGHTINGALE LANE, SW12

£625,000

Two double bedrooms
Overlooking common
Art deco building
Concierge
Swimming pool
Roof terrace

@marshandparsons
marshandparsons.co.uk

MARSH &
PARSONS



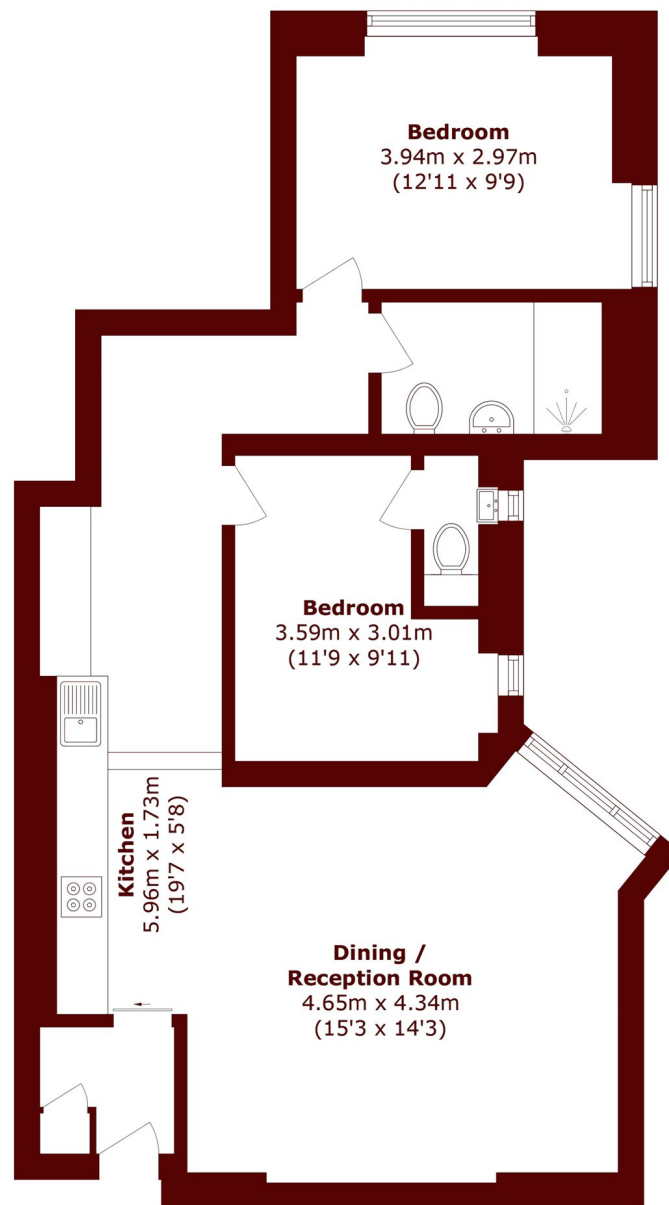
ABOUT THE PROPERTY

Situated in a stunning art deco building, this two double bedroom flat benefits from a bright outlook on to Clapham Common and is presented in excellent condition throughout. Amenities include a gym, swimming pool and a roof terrace with incredible views of the city.

Positioned on the corner of Nightingale Lane, Hightrees House is just a few steps away from the common. Clapham South Tube is nearby, along with the endless choice of local pubs, shops and restaurants of Clapham, Northcote Road and Balham Hill.



STEP INSIDE NIGHTINGALE LANE



Total area (approx.): 70.8 sq. m (762.0 sq. ft)

Battersea
020 7326 9920

Energy Rating: C We aim to make our particulars both accurate and reliable. However, they are not guaranteed; nor do they form part of an offer or contract. If you require clarification on any points then please contact us, especially if you're traveling some distance to view. Please note that appliances and heating systems have not been tested and therefore no warranties can be given as to their good working order

**MARSH &
PARSONS**