



## GLOUCESTER MEWS, W2

£1,750,000

Private garage  
No onward chain  
Private roof terrace  
Three double bedrooms  
Two bathrooms (One En-Suite)  
EPC - D

@marshandparsons  
marshandparsons.co.uk

MARSH &  
PARSONS

# ABOUT THE PROPERTY

A well-presented modern mews house arranged over three floors, featuring a private roof terrace and garage. Quietly positioned within a sought-after mews, the property sits within easy reach of Hyde Park, Lancaster Gate and Paddington. The accommodation offers a generous reception and dining room with attractive wood flooring throughout.

Gloucester Mews is a peaceful cobbled mews in a privileged location. Paddington and Lancaster Gate stations provide swift access to the Heathrow Express, Elizabeth line and Central line, Hyde Park is moments away, and the vibrant shops and restaurants of Westbourne Grove are an enjoyable walk from the door.

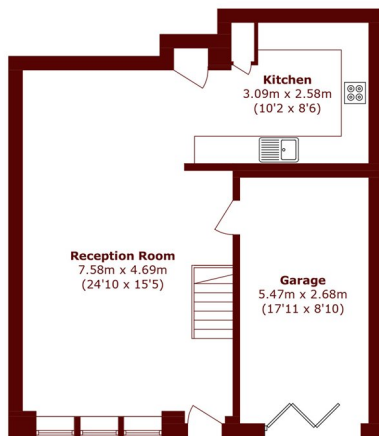




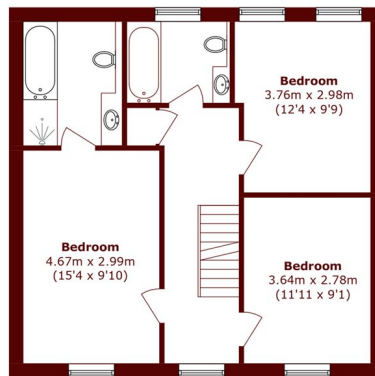




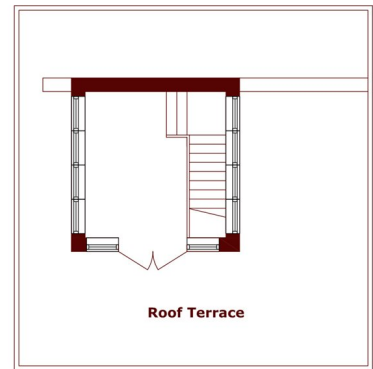
# STEP INSIDE GLOUCESTER MEWS



**Ground Floor**



**First Floor**



**Second Floor**

Total area (approx.): 129.0 sq. m (1388.5 sq. ft)  
(Including Garage)  
Roof Terrace Total (approx.): 49.5 sq. m (532.8 sq. ft)

**Notting Hill**  
020 7313 2890

Energy Rating: D We aim to make our particulars both accurate and reliable. However, they are not guaranteed; nor do they form part of an offer or contract. If you require clarification on any points then please contact us, especially if you're traveling some distance to view. Please note that appliances and heating systems have not been tested and therefore no warranties can be given as to their good working order

**MARSH &  
PARSONS**