



## BRIXTON HILL, SW2

£450,000

Two Double Bedrooms  
Close To Transport  
Communal Gardens  
Immaculate Condition  
Ample Built-In Storage  
Energy Rating: C



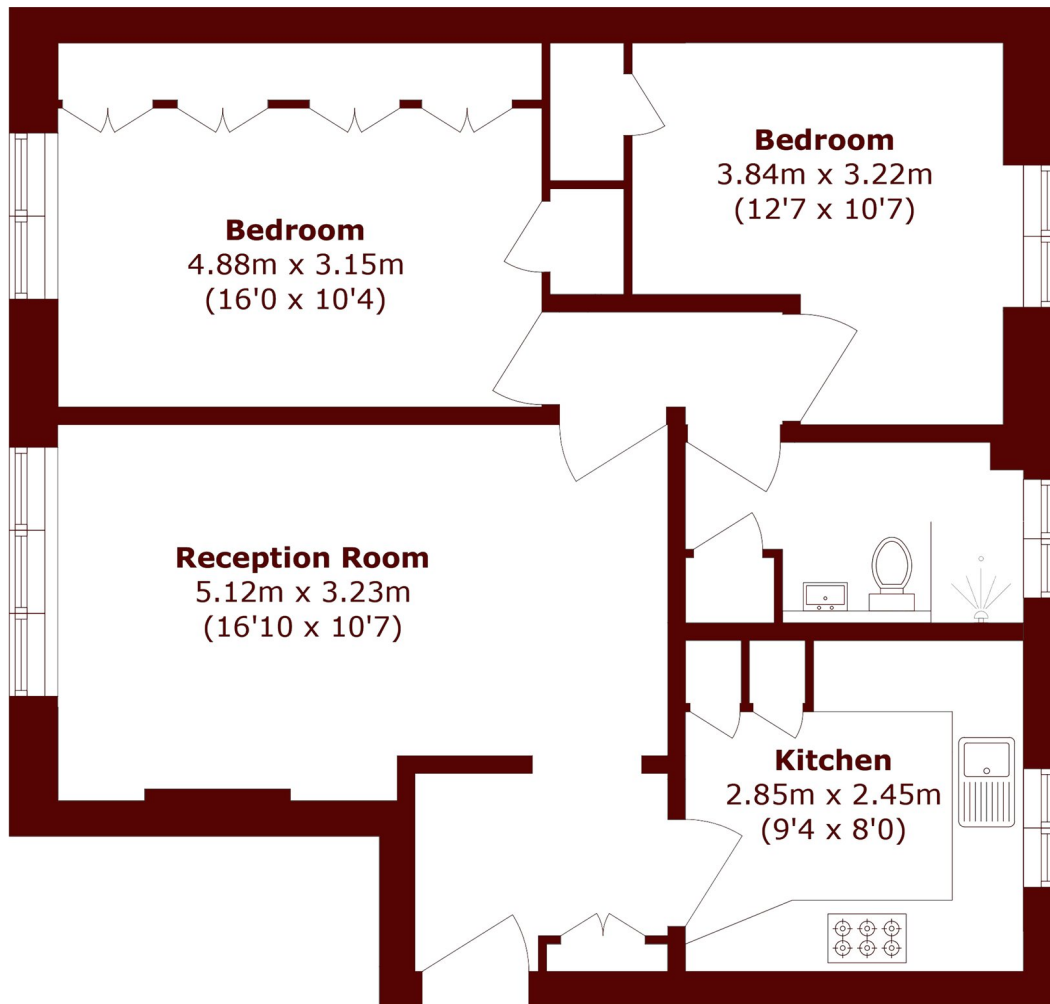
# ABOUT THE PROPERTY

A spacious two bedroom flat in immaculate condition set on the third floor offering a generous reception/dining room, a fitted kitchen with integrated appliances and solid worktops, two well-proportioned double bedrooms with bespoke built-in storage and a modern bathroom.

Arlington Lodge is a sought after development, close to the vast array of independent shops, cafes, bars and restaurants of Brixton alongside the excellent transport links into central London via Brixton Underground (Victoria Line), National Rail services and multiple bus routes.



# STEP INSIDE BRIXTON HILL



Total area (approx.): 61.8 sq.m (666.0 sq. ft)

**Brixton**  
020 7733 4595

Energy Rating: C We aim to make our particulars both accurate and reliable. However, they are not guaranteed; nor do they form part of an offer or contract. If you require clarification on any points then please contact us, especially if you're traveling some distance to view. Please note that appliances and heating systems have not been tested and therefore no warranties can be given as to their good working order

**MARSH &  
PARSONS**